



Blackboard Quick Reference Guide 8.0

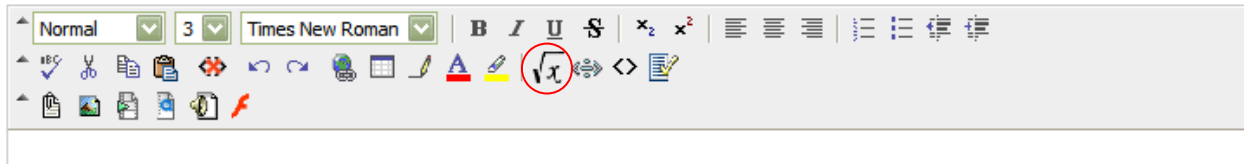
Math & Science Notation Tool



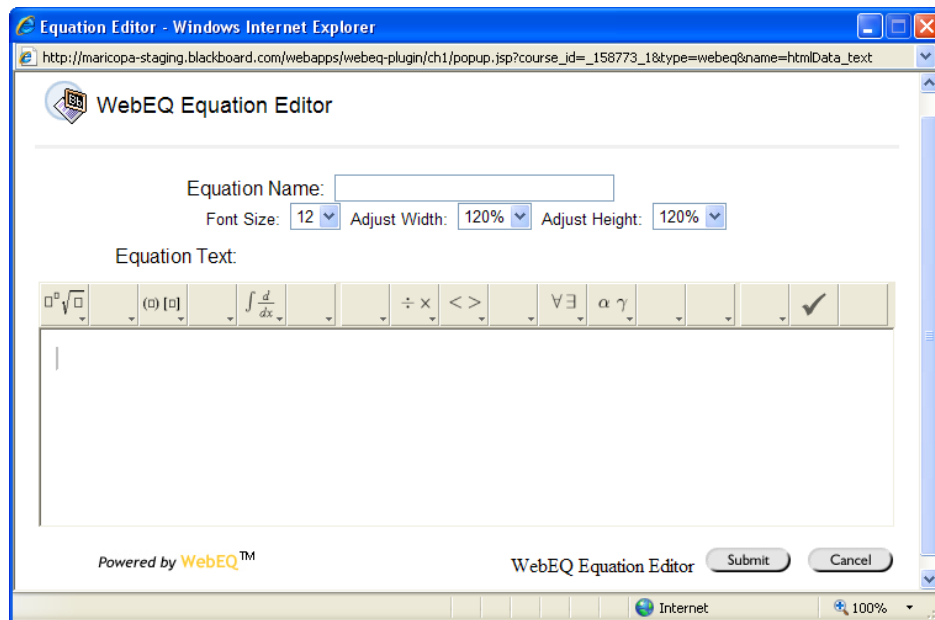
Use the Math and Science Notation Tool to add mathematical and scientific equations into content areas and assessment items. The WebEQ Equation Editor opens a new window that includes symbols and buttons you use to “write” equations.

The WebEQ Equation Editor is accessible from the text editor box (pictured below). The text editor box displays when you Add Item or Folder in a content area and when you are creating test or survey questions.

Text



Step 1: In the text box editor, click the WebEQ button , which displays this window:


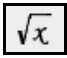


Step 2: At the *Equation Name* field, provide a name for the equation.

Step 3: Select the font size, width, and height.

Step 4: Use the symbols on the toolbar and numbers on the keyboard to create the equation. Clicking on a symbol displays additional symbols from that symbol family.

Step 5: Click the **Submit** button to submit the equation.

 To edit an existing equation, select the equation, then click .