

**Chandler-Gilbert**

**Estrella Mountain**

**GateWay**

**Glendale**

**Mesa**

**Paradise Valley**

**Phoenix**

**Rio Salado**

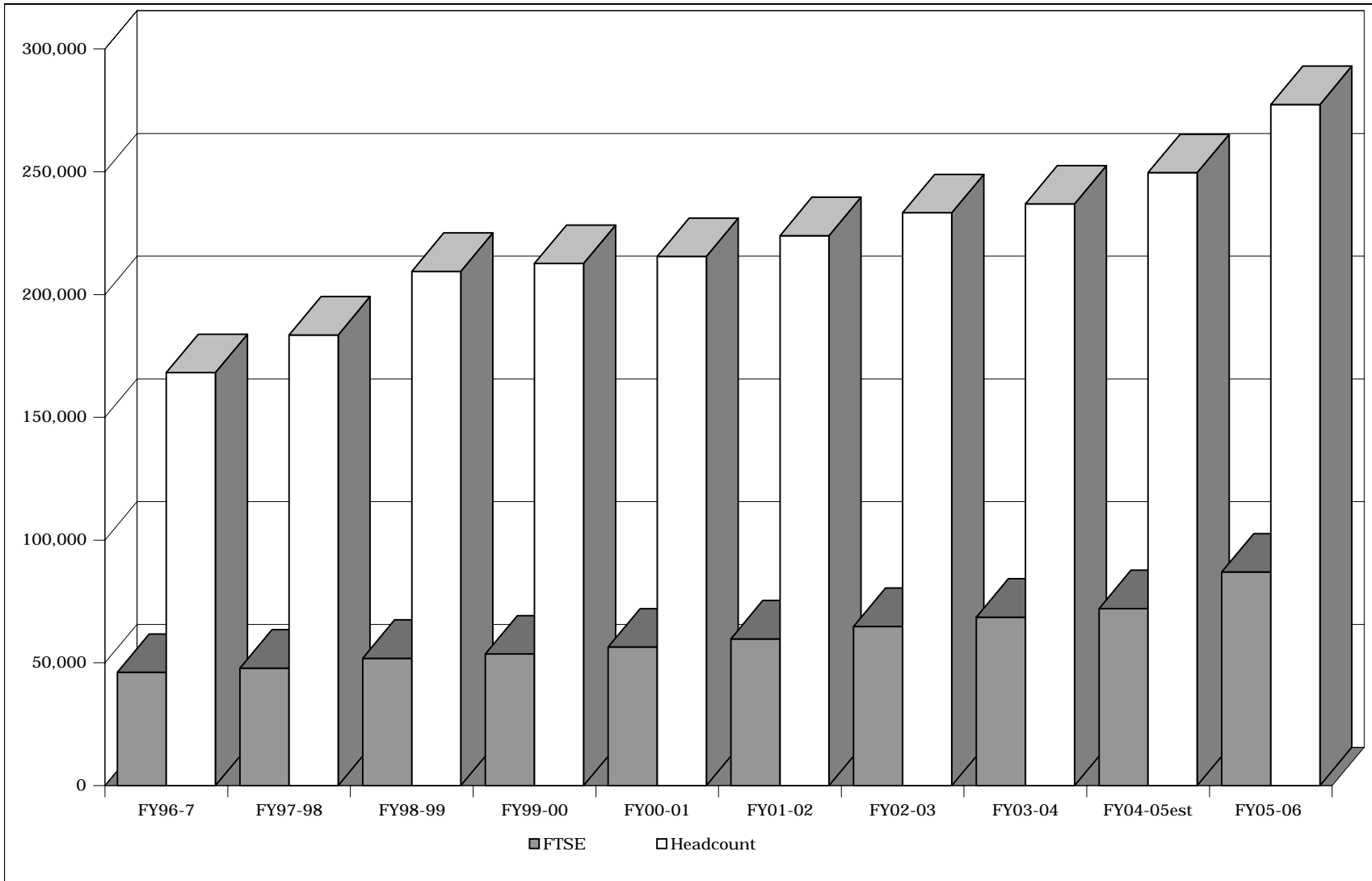
**Scottsdale**

**South Mountain**

**Appendix**  
**FY 2005-2006**

FY 1996-97 through FY 2005-06

### Maricopa Community Colleges Student Enrollment



MARICOPA COMMUNITY COLLEGES  
STUDENT ENROLLMENT

<b>Headcount *</b>	ACTUAL FISCAL 1996-97	ACTUAL FISCAL 1997-98	ACTUAL FISCAL 1998-99	ACTUAL FISCAL 1999-00	ACTUAL FISCAL 2000-01	ACTUAL FISCAL 2001-02	ACTUAL FISCAL 2002-03	ACTUAL FISCAL 2003-04	PROJECTED FISCAL 2004-05	PROJECTED FISCAL 2005-06
Phoenix	19,441	19,342	20,660	21,533	21,463	22,289	22,296	22,480	22,571	23,641
Glendale	29,205	29,180	30,975	32,965	33,174	33,259	33,888	34,360	34,875	36,121
GateWay	14,097	15,185	14,860	15,525	17,117	15,954	16,251	15,918	16,714	15,543
Mesa	36,185	37,247	38,589	38,270	38,542	39,869	41,941	43,931	45,094	51,399
Scottsdale	16,260	16,074	16,817	17,763	18,095	19,380	20,028	19,639	19,836	21,528
Rio Salado	24,717	25,733	31,072	30,410	34,198	36,097	38,419	41,280	47,353	57,159
South Mountain	4,457	4,470	5,105	5,286	5,764	6,163	6,587	7,200	7,411	9,257
Chandler-Gilbert	6,113	6,872	7,975	9,377	10,038	10,712	12,179	12,416	13,377	16,546
Paradise Valley	9,937	9,965	10,355	11,020	11,600	12,687	12,480	13,004	14,016	15,713
Estrella Mountain	4,676	5,338	6,836	7,303	7,441	8,291	8,922	9,040	10,249	12,451
Subtotal	165,088	169,406	183,244	189,452	197,432	204,701	212,991	219,268	231,495	259,359
Maricopa Skill Center	3,137	1,505	1,868	1,961	2,106	2,482	2,211	2,289	2,409	2,618
Southwest Skill Center	0	0	0	0	91	435	388	730	1,014	1,856
ABE/GED/ESL	0	12,649	24,368	21,288	15,875	16,401	17,747	14,636	14,758	13,607
Subtotal	3,137	14,154	26,236	23,249	18,072	19,318	20,346	17,655	18,181	18,081
Total Headcount	168,225	183,560	209,480	212,701	215,504	224,019	233,337	236,923	249,676	277,439
<b>Full-Time Student Equivalent (FTSE)</b>	ACTUAL FISCAL 1996-97	ACTUAL FISCAL 1997-98 **	ACTUAL FISCAL 1998-99	ACTUAL FISCAL 1999-00	ACTUAL FISCAL 2000-01	ACTUAL FISCAL 2001-02	ACTUAL FISCAL 2002-03	ACTUAL FISCAL 2003-04	PROJECTED FISCAL 2004-05	PROJECTED FISCAL 2005-06
Phoenix	5,704	5,592	5,826	5,998	6,015	6,297	6,761	6,909	6,937	7,420
Glendale	8,702	8,707	9,069	9,391	9,685	9,760	10,681	11,017	11,182	11,944
GateWay	2,438	2,576	2,601	2,647	2,881	3,046	3,441	3,703	3,888	4,083
Mesa	11,506	11,822	12,341	12,294	12,511	13,374	14,410	15,116	15,516	16,584
Scottsdale	4,643	4,624	4,819	5,048	5,316	5,784	6,210	6,396	6,460	7,204
Rio Salado	5,647	6,076	7,196	7,310	8,176	8,201	8,771	9,938	11,400	12,350
South Mountain	1,348	1,367	1,440	1,446	1,515	1,633	1,838	2,014	2,073	2,379
Chandler-Gilbert	1,740	1,913	2,172	2,503	2,927	3,358	3,849	4,230	4,558	5,119
Paradise Valley	2,565	2,571	2,819	3,087	3,275	3,448	3,724	3,970	4,279	4,589
Estrella Mountain	1,010	1,243	1,641	1,772	1,881	2,116	2,461	2,587	2,933	3,299
Subtotal	45,303	46,490	49,925	51,497	54,181	57,018	62,146	65,880	69,226	74,971
Maricopa Skill Center	832	885	831	962	938	1,154	971	764	804	833
Southwest Skill Center	0	0	0	0	31	122	143	234	325	595
ABE/GED/ESL	0	500	1,115	1,174	1,284	1,485	1,566	1,734	1,748	1,848
Subtotal	832	1,385	1,946	2,136	2,253	2,761	2,680	2,732	2,877	3,276
Total FTSE	46,135	47,875	51,871	53,633	56,433	59,779	64,826	68,612	72,103	78,247

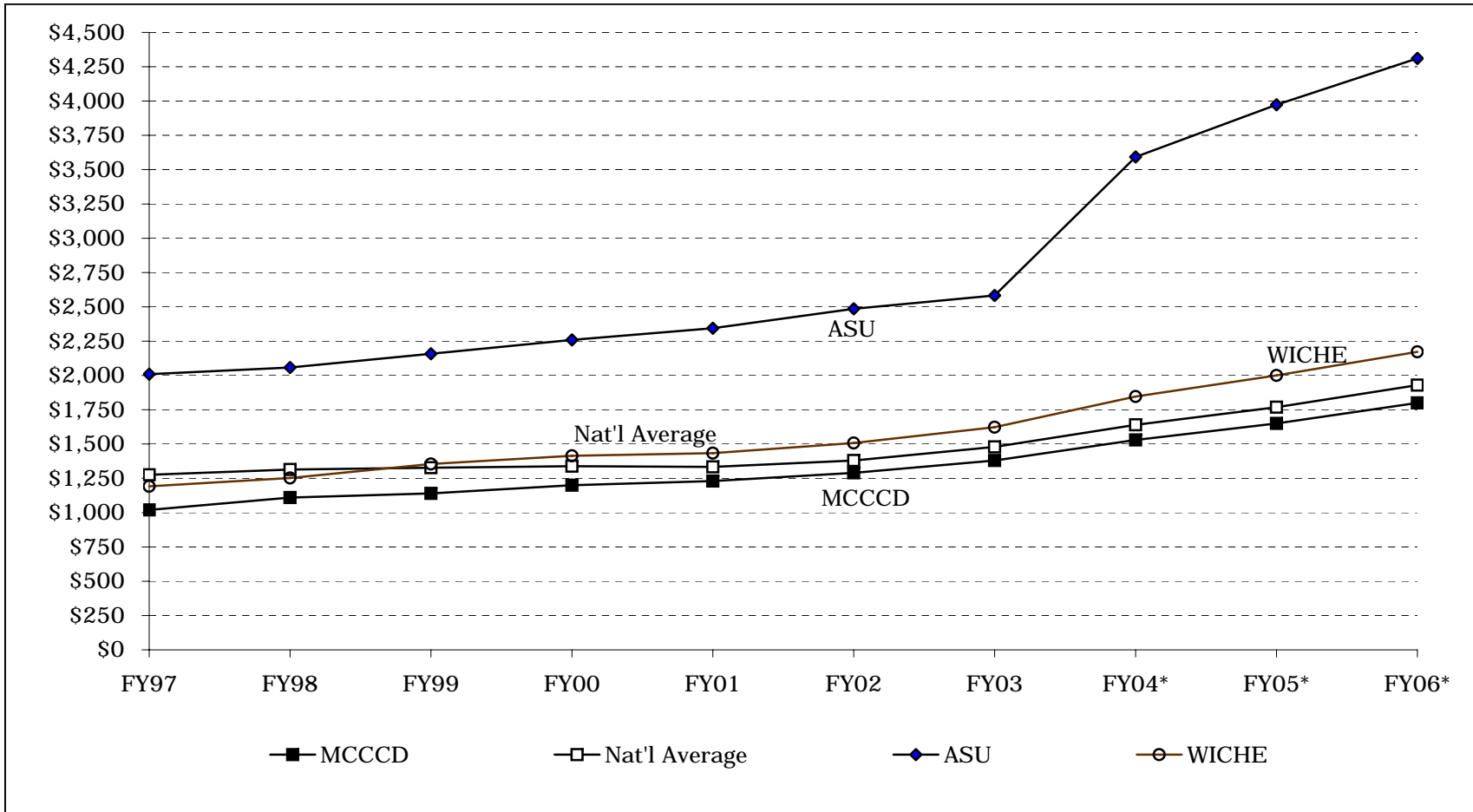
\* Headcount reflects credit courses only.

\*\* Restated per college shared FTSE agreements.

Note: Columns may not add due to rounding.

FY 1996-97 through FY 2005-06

### Maricopa Community Colleges Annual Tuition and Fee Comparison National Average for 2 Year Institutions - ASU



\* National Averages Are Projected, ASU & MCCC Tuition Rates are actual in all years.

MARICOPA COMMUNITY COLLEGES  
HISTORIC TUITION AND FEES  
LOCAL, WICHE,  
AND NATIONAL COMPARISON

**MCCCD Historic Tuition & Fees**

Fiscal Year	Per Credit Hour			Annual	Increase /	
	Current Unrestricted Fund 1	Current Auxiliary Fund 2	Combined Total	Cost Per Fulltime Student	Dollars	Percent
FY 1996-97	24.00	10.00	34.00	1,020.00	-	0.00%
FY 1997-98	26.00	11.00	37.00	1,110.00	90.00	8.82%
FY 1998-99	27.00	11.00	38.00	1,140.00	30.00	2.70%
FY 1999-00	28.00	12.00	40.00	1,200.00	60.00	5.26%
FY 2000-01	28.50	12.50	41.00	1,230.00	30.00	2.50%
FY 2001-02	30.50	12.50	43.00	1,290.00	60.00	4.88%
FY 2002-03	33.50	12.50	46.00	1,380.00	90.00	6.98%
FY 2003-04	38.50	12.50	51.00	1,530.00	150.00	10.87%
FY 2004-05	53.50	1.50 (3)	55.00	1,650.00	120.00	7.84%
FY 2005-06	58.50	1.50	60.00	1,800.00	150.00	9.09%

**Local, National, and WICHE Comparisons**

Fiscal Year	MARICOPA DISTRICT		NATL. AVG. PUBLIC 2YR INST.		WICHE AVG. PUBLIC 2YR INST.		AZ STATE UNIVERSITY	
	Annual Cost	Percent Change	Annual Cost	Percent Change	Annual Cost	Percent Change	Annual Cost	Percent Change
FY 1996-97	1,020.00	0.00%	1,276.00 (1)	2.99%	1,192.00	3.03% (4)	2,009.00	3.03%
FY 1997-98	1,110.00	8.82%	1,314.00 (1)	2.98%	1,252.00	5.03% (4)	2,058.00	2.44%
FY 1998-99	1,140.00	2.70%	1,327.00 (1)	0.99%	1,355.00	8.23% (4)	2,158.00	4.86%
FY 1999-00	1,200.00	5.26%	1,338.00 (1)	0.83%	1,414.00	4.35% (4)	2,259.00	4.68%
FY 2000-01	1,230.00	2.50%	1,333.00 (1)	-0.37%	1,434.00	1.41% (4)	2,344.00	3.76%
FY 2001-02	1,290.00	4.88%	1,380.00 (1)	3.53%	1,507.00	5.09% (4)	2,486.00	6.06%
FY 2002-03	1,380.00	6.98%	1,479.00 (1)	7.17%	1,623.00	7.70% (4)	2,583.00	3.90%
FY 2003-04	1,530.00	10.87%	1,639.76 (2)	10.87%	1,846.00	13.74% (4)	3,593.00	39.10%
FY 2004-05	1,650.00 (3)	7.84%	1,768.37 (2)	7.84%	2,000.00	8.34% (4)	3,973.00	10.58%
FY 2005-06	1,800.00 (3)	9.09%	1,929.13 (2)	9.09%	2,171.76	8.59% (5)	4,311.00	8.51%

(1) Source: U.S. Dept of Education, National Center for Education Statistics 2003, Web Release - December 30, 2004

(2) Annual Cost: Assuming variance remains at 90% of National Average

(3) Starting in FY05, \$11 of the Student Activities Fee was combined with General Tuition.

(4) Source: Western Interstate Commission for Higher Education (WICHE) - Average Tuition and Fees at Public Institution in WICHE Region

(5) FY06 Annual cost for WICHE is estimated

MARICOPA COMMUNITY COLLEGES  
PROPERTY TAXES FOR VARIOUS HOME VALUES

Property taxes represent a major source of support for the general operations and capital needs of the Maricopa Community Colleges. The following illustrates the property tax that owners of homes with varying assessed valuations may expect to pay in FY 2005-06.

Approx. Value for Taxes	Tax Rate	\$50,000	\$60,000	\$70,000	\$80,000	\$90,000	\$100,000
Assessment Ratio @ 10%	Per \$100 Assessed Value	\$5,000	\$6,000	\$7,000	\$8,000	\$9,000	\$10,000

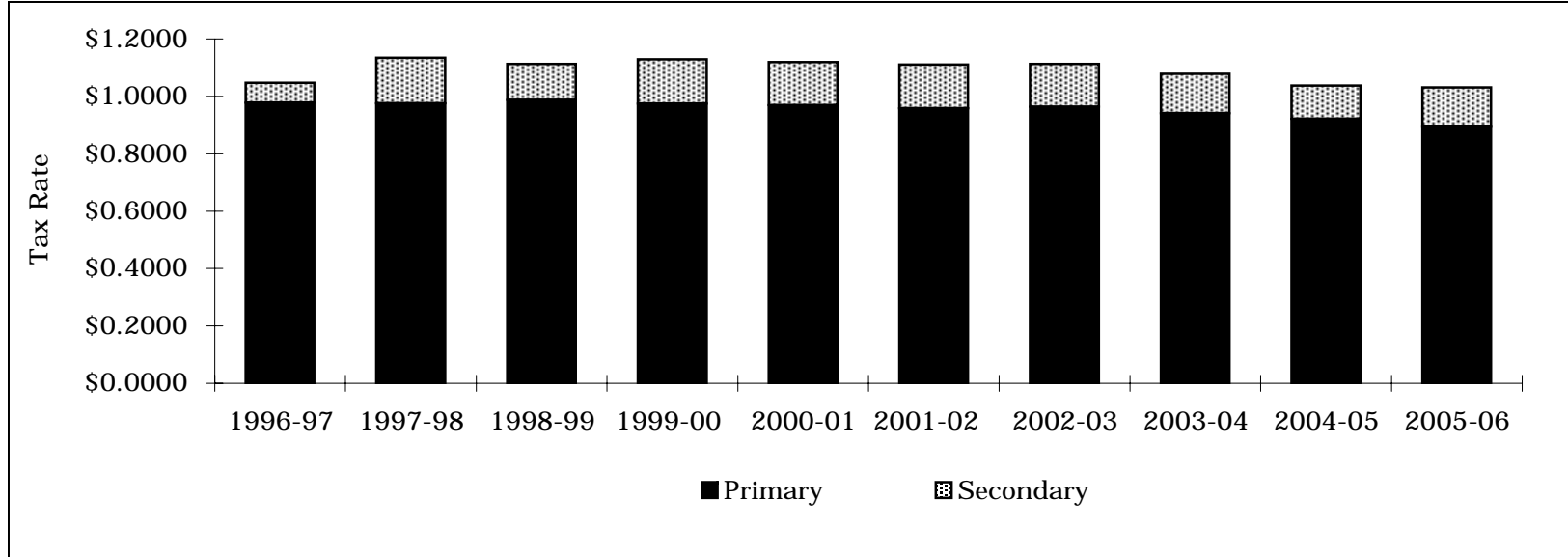
FY 2005 - 2006 Tax Rates for the Maricopa Community Colleges

Primary Tax @	\$0.8936	\$44.68	\$53.62	\$62.55	\$71.49	\$80.42	\$89.36
Secondary Tax (est) @	\$0.1379	\$6.90	\$8.27	\$9.65	\$11.03	\$12.41	\$13.79
Combined Tax @	<u>\$1.0315</u>	<u>\$51.58</u>	<u>\$61.89</u>	<u>\$72.21</u>	<u>\$82.52</u>	<u>\$92.84</u>	<u>\$103.15</u>

FY 1996-97 through FY 2005-06

Maricopa Community Colleges  
Historic Tax Rates

Property taxes are a major revenue source for the operating and capital needs of the Maricopa Community Colleges. The chart and table below provide historic information on the primary and secondary property tax rates for the Maricopa Community Colleges.



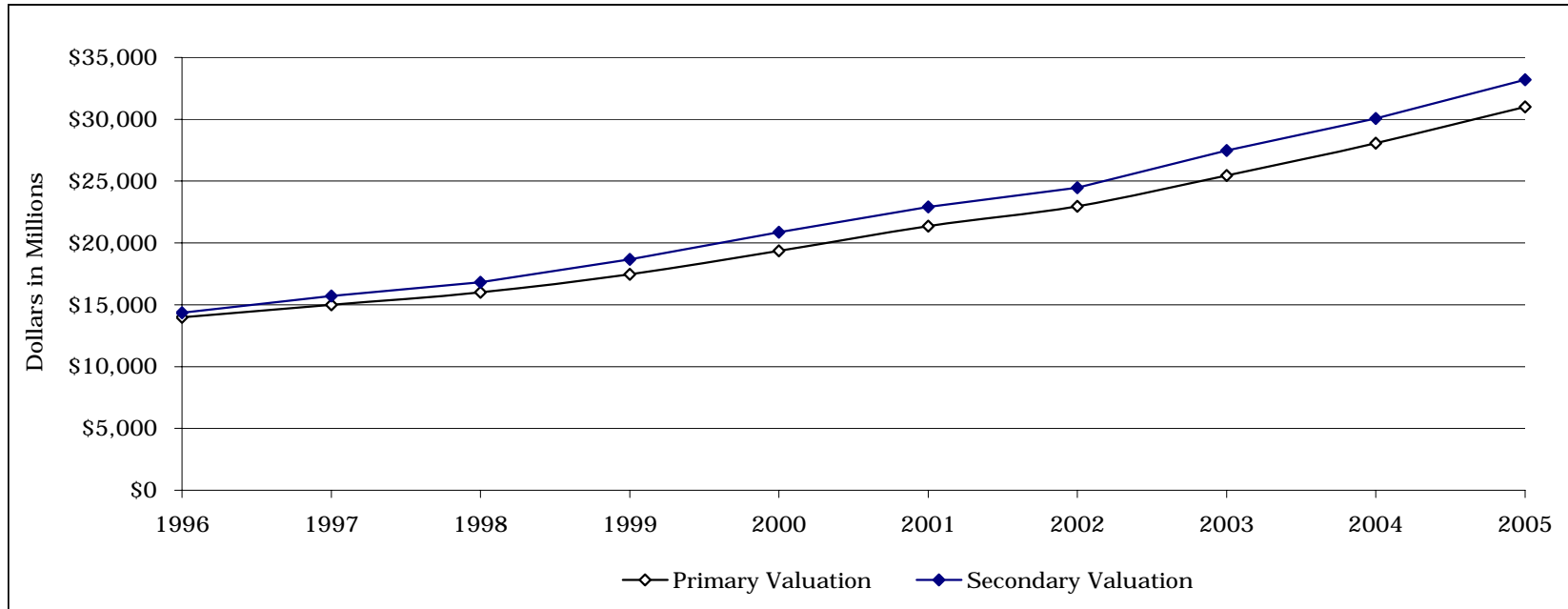
Rates per \$100 of Assessed Valuation

Fiscal Year	Primary	Secondary	Total
1996-97	\$0.9772	\$0.0704	\$1.0476
1997-98	\$0.9747	\$0.1599	\$1.1346
1998-99	\$0.9866	\$0.1259	\$1.1125
1999-00	\$0.9741	\$0.1544	\$1.1285
2000-01	\$0.9691	\$0.1503	\$1.1194
2001-02	\$0.9583	\$0.1524	\$1.1107
2002-03	\$0.9634	\$0.1493	\$1.1127
2003-04	\$0.9410	\$0.1375	\$1.0785
2004-05	\$0.9211	\$0.1161	\$1.0372
2005-06	\$0.8936	\$0.1379	\$1.0315

1996 through 2005

## Maricopa Community Colleges Historic Assessed Valuation - Maricopa County

The chart and table below provide historic information on the total assessed valuation of property in Maricopa County. The assessed valuation is a factor in determining the primary and secondary tax levies of the Maricopa Community Colleges.



Tax Year	PRIMARY				SECONDARY		
	Assessed Valuation	Increase / (Decrease)			Assessed Valuation	Increase / (Decrease)	
		Amount	Percent	Per FTSE		Amount	Percent
1996	13,975,668,204	481,931,378	3.6%	308,493	14,343,156,861	223,721,915	1.6%
1997	15,006,270,531	1,030,602,327	7.4%	319,350	15,723,498,194	1,380,341,333	9.6%
1998	16,017,265,623	1,010,995,092	6.7%	313,818	16,813,017,261	1,089,519,067	6.9%
1999	17,463,875,533	1,446,609,910	9.0%	331,565	18,676,830,848	1,863,813,587	11.1%
2000	19,362,298,255	1,898,422,722	10.9%	349,090	20,877,715,546	2,200,884,698	11.8%
2001	21,355,326,477	1,993,028,222	10.3%	365,030	22,913,134,480	2,035,418,934	9.7%
2002	22,955,864,882	1,600,538,405	7.5%	360,307	24,457,047,282	1,543,912,802	6.7%
2003	25,447,850,971	2,491,986,089	10.9%	376,370	27,477,987,528	3,020,940,246	12.4%
2004	28,070,870,413	2,623,019,442	10.3%	335,977	30,066,986,670	2,588,999,142	9.4%
2005	31,010,284,705	2,939,414,292	10.5%	371,158	33,197,218,398	3,130,231,728	10.4%

MARICOPA COMMUNITY COLLEGES  
TAX RATES AND MAXIMUM LEVIES

MAXIMUM LEVY AND TAX RATE CALCULATIONS	
1. Maximum Prior Year Levy	\$258,560,787
2. Line 1 increased by 2%	\$263,732,003
3. Current Assessed Value of Last Year's Property	\$29,514,263,431
4. Line 3 divided by 100	\$295,142,634
5. Maximum Tax Rate FY 2005-06 (Line 2 / Line 4)	\$0.8936
6. Current Assessed Value including New Property	\$31,010,284,705
7. Current Assessed Value divided by 100	\$310,102,847
8. Maximum Levy Amount FY 2005-06 (Line 7 X Line 5)	\$277,107,904
<b>SALT RIVER PROJECT CENTRALLY ASSESSED VALUATION (CAV)**</b>	
SRP CAV at 2004 Values (Actual)	\$540,196,036
SRP CAV at 2005 Values (estimate)	\$535,374,230
SRP CAV at 2005 Values / 100	\$5,353,742
9. SRP In-lieu Tax Amount FY 2005-06	\$4,784,104

\* Valuations are per the County Dept. of Finance, February 2005.

\*\* SRP centrally assessed valuation estimates were obtained from SRP as of 3/8/2004. Actuals will not be known until August 2005.

PRIMARY TAX LEVY AND RATE	
Primary Levy Amount FY 2004-05	\$258,560,787
Primary Tax Rate FY 2004-05	\$0.9211
Maximum Primary Levy Amount FY 2005-06	\$277,107,904
Maximum Primary Tax Rate FY 2005-06	\$0.8936
Primary Levy - M&O	\$277,107,904
Primary Levy - Capital	\$0
10. Subtotal - Primary Levy FY 2005-06	\$277,107,904
SRP In-lieu Tax Amount FY 2005-06	\$4,784,104
Total Levy & In-lieu FY 2005-06	\$281,892,008
11. Primary Tax Rate FY 2005-06 (Line 10 / Line 7)	\$0.8936

SECONDARY TAX RATE AND LEVY	
Current Assessed Valuation for 2005	\$33,197,218,398
Est. SRP Current Assessed Valuation for 2005	\$535,374,230
Total to calculate Secondary Tax Rate and Levy Amount	\$33,732,592,628
Levy Amount Needed (G.O. Bond Principal and Interest)	\$45,791,129
SRP In-lieu Needed (G.O. Bond Principal and Interest)	\$738,477
12. Tax Rate FY 2005-06	\$0.1379

COMBINED TAX RATES FOR FY 2005-06* PER \$100.00 OF ASSESSED VALUATION	
11. Primary Levy Rate	\$0.8936
12. Secondary Levy Rate	\$0.1379
Combined Levy Rate	\$1.0315