



College Financial System User Procedure

Title:

FRS Legacy Value Conversion

Description:

FRS (Financial Records System) is the name used to identify the GL legacy system, that was replaced by the College Financial System (CFS) in 1996. However, there continues to be a need to refer to the legacy FRS values since they are currently in use by one of the subsidiary systems that feeds transactions into CFS General Ledger. This feeder system is the Student Information System, or SIS. Each week, the SIS system sends accounting transactions in the legacy FRS account format to the CFS General Ledger. Before it can be imported as a valid CFS Journal Entry, it must be reformatted in the CFS account code structure. This process is sometimes referred to as LTCU (Legacy Translation Conversion Utility). This procedure guide is used by only a handful of CFS users, typically a few of the accounting staff at the District Office, as well as the fiscal agents at the colleges. As long as we continue to run two charts of accounts, one from legacy FRS and the main CFS chart of accounts, there will be a need to translate these legacy values.

College Financial System (CFS) Prerequisites:

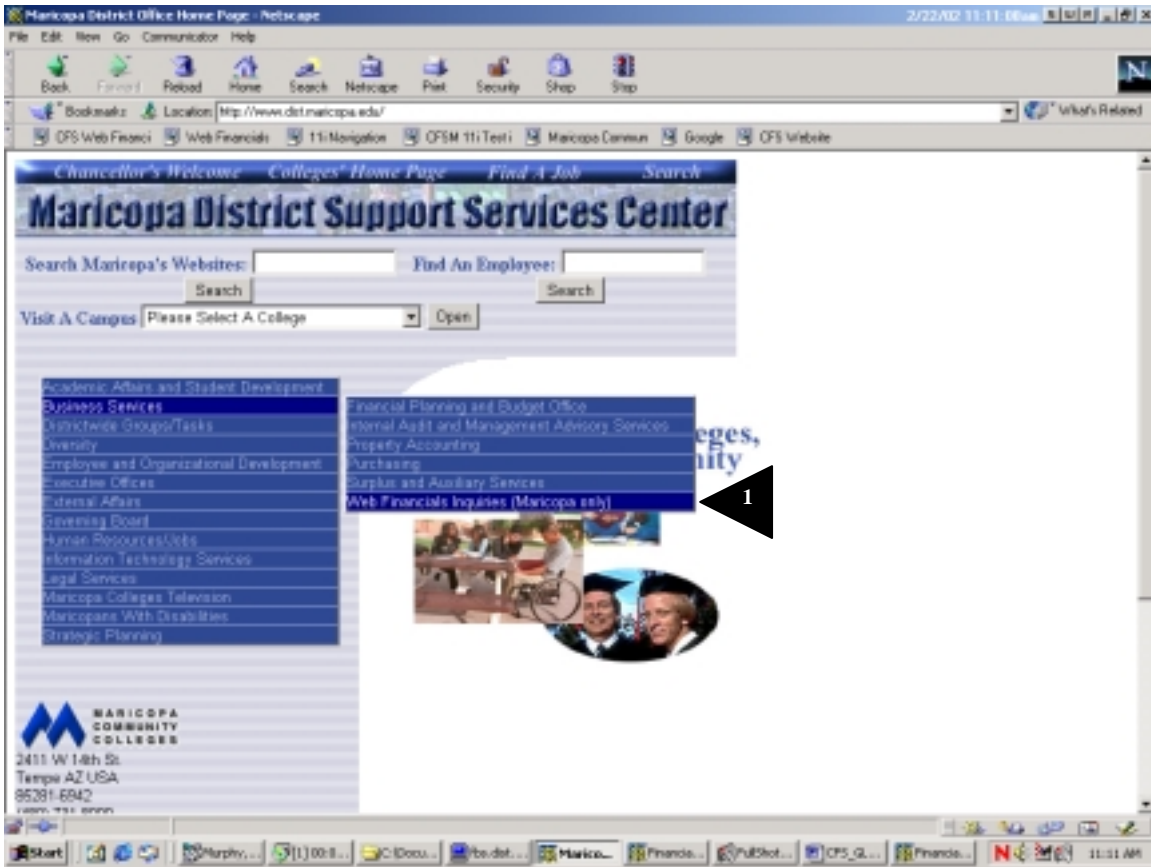
- *You need to have a unique Username and Password to access this information. For this, you should contact your Fiscal Agent.*
- *You also need an internet Browser, such as Netscape or Internet Explorer.*

Menu Path

http://fbs2.dist.maricopa.edu/ows-bin/WEB/owa/wfr_0900.fGateway

Window Name:

Maricopa District Office Homepage



Web Financials can also be accessed from the Maricopa Homepage by drilling down through the Business Services menu.

Field Name Description/Action

- 1. Web Financials Link** If you don't have Web Financials bookmarked, you can access it through the District Office homepage menus.

Window Name:

SignOn Screen

Location: http://fbs2.dist.maricopa.edu/ows-bin/WEB/owa/wfr_0900.fGateway

Web Financials 11i Navigation CFSM 11i Test i Maricopa Commun Google CFS Website

Financial Reports Signon

Signon 2

Password 3

4

Field Name	Description/Action
------------	--------------------

2. Signon	Enter your user name.
------------------	-----------------------

3. Password	Enter your password.
--------------------	----------------------

 **Note:** You must get this Signon and Password from your college Fiscal Agent.

4. Click the SUBMIT button.	
------------------------------------	--

Window Name:

Financials Report Screen

Financial Reports

GL Account Balances

This page shows CFS General Ledger balances matching those shown on the CFS **Funds Available** online form or **RE012 report**, with drill-downs to transaction details for Budgets, Expenditures, and Requisition/PO Encumbrances.

FRS to CFS Translation

This page lets you enter a legacy FRS account code (as used in SIS) and returns the equivalent CFS system account code. You do not have to supply values for unit or object code, but you can use them to narrow the search.

5

- | Field Name | Description/Action |
|------------|---|
| 5. | Select the link for FRS TO CFS TRANSLATION . |

Window Name:

Legacy FRS to CFS Account Code Translation

Legacy FRS to CFS Account Code Translation

FRS Account FRS Unit FRS Object

11001 6 S4100


Enter FRS Account [required], Unit [optional], Object Code [optional]

Object Code (if entered) must start with "G" for General Ledger or "S" for Subsidiary Ledger

Submit Reset

This is the screen where you enter the legacy FRS 10-digit account number for your search criteria. After submitting your query, the CFS translated value will appear.

Field Name	Description/Action
6. FRS Account	Enter the appropriate FRS account for your search.
7. FRS Unit	Enter the single-character (numeric or alpha) unit value for your search (Ex. 6 = Rio Salado,; 1= Phoenix College, etc.).
8. FRS Object	Enter the appropriate value for your search. If Revenue or Expense code, you must enter the value S preceding the legacy object code; if the search is for Asset or Liability code, then precede the number with G .

 **Note:** Account is a required field to enter. If you enter Object Code, you must enter the sub-ledger alpha character(s) S or G. In effect, this is a 5-character field for legacy FRS object code.

9. Click on the **SUBMIT** button in order to return a list of values meeting your criteria.

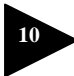
Window Name:

Legacy FRS to CFS Account Code Translation

Legacy FRS to CFS Account Code Translation

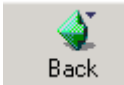
FRS Account	FRS Unit	FRS Object
11001	6	S4100

Click on the FRS Account link to see  CFS account description

FRS Legacy	Equivalent CFS Code Combination(s)							
Account	Fund	Unit	ChargeCtr	Object	SubObj	Grant	Project	
 11001-6-S4100	110	350	151010	54100	0000	00000	000000	

Translation Lines Returned: 1 

- | Field Name | Description/Action |
|---|--|
| 10. FRS Legacy Account | Returned by the query, based on earlier screen parameters selected for the legacy system FRS account, required to be translated to CFS corresponding values. |
| 11. Equivalent CFS Code Combination(s) | Displays the CFS translated values, for Fund/Unit/Charge Center/Object Code. |
| 12. Translation Lines Returned | Displays the number of lines (in this example, a single line translation occurred) that correspond to the search criteria. |

Use the Back button  on your Browser to return to the screen where you entered your original inquiry.

It's also possible to see all values of a given FRS charge center, translated into CFS code combination, using this translation form.

Window Name:

Legacy FRS to CFS Account Code Translation

Legacy FRS to CFS Account Code Translation

FRS Account	FRS Unit	FRS Object
11001	6	

Legacy FRS to CFS Account Code Translation

FRS Account	FRS Unit	FRS Object
11001	6	S

Click on the FRS Account link to see the full CFS account description

FRS Legacy	Equivalent CFS Code Combination(s)							
	Account	Fund	Unit	ChargeCtr	Object	SubObj	Grant	Project
11001-6-S0510	110	350	151010	45105	0000	00000	000000	
11001-6-S0511	110	350	151010	45110	0000	00000	000000	
11001-6-S0512	110	350	151010	45120	0000	00000	000000	
11001-6-S0513	110	350	151010	45130	0000	00000	000000	
11001-6-S0516	110	350	151010	45160	0000	00000	000000	
11001-6-S0517	110	350	151010	45170	0000	00000	000000	
11001-6-S0522	110	350	151010	45220	0000	00000	000000	
11001-6-S0526	110	350	151010	45260	0000	00000	000000	
11001-6-S0528	110	350	151010	45280	0000	00000	000000	
11001-6-S0593	110	350	151010	45930	0000	00000	000000	
11001-6-S0810	110	350	151010	48010	0000	00000	000000	
11001-6-S0890	110	350	151010	48090	0000	00000	000000	
11001-6-S4100	110	350	151010	54100	0000	00000	000000	
11001-6-S5200	110	350	151010	55200	0000	00000	000000	



End of procedure