



**SirsiDynix Web Reporter Version 1.5**

**Web Reporter version 1.5 on**

**Horizon version 7.4.1**

**Release Notes**

© 2006-2008 SirsiDynix. All rights reserved.

The processes and all the routines contained herein are the proprietary properties and trade secrets of SirsiDynix. Except as provided by license agreement, this manual shall not be duplicated, used or disclosed for any purpose or reason, in whole or in part, without the express written consent of SirsiDynix. The information in this document is subject to change without notice and should not be construed as a commitment by SirsiDynix.

SirsiDynix grants the right of copying the enclosed material solely for the internal business use of the end user if (1) this document has been obtained by purchase or by license agreement in conjunction with SirsiDynix products, and (2) this copyright statement is included with each copy. All other copying or distribution is strictly prohibited.

Use, duplication, or disclosure by the U.S. Government is subject to restrictions as set forth in sub-paragraph (b)(3) of the Rights in Technical Data and Computer Software clause in DFARS 252.227-7013.

Rights for non-DOD U.S. Government departments and Agencies are as set forth in FAR 52.227-19(c)(1,2).

Sirsi®, WebCat®, Vizion®, WorkFlows®, Unicorn®, UnicornECOLE®, UnicornOASIS®, UnicornSTILAS®, Site Source®, DRA®, DRA Net®, Inlex®, MultiLIS®, Taos®, JurisLink™, Corinthian®, Dynix®, URSA®, Horizon™, Remote Patron Authentication™, and TeleCirc™ are trademarks of SirsiDynix.

Other product and company names herein may be the trademarks of their respective owners. All titles, versions, trademarks, claims of compatibility, etc., of hardware and software products mentioned herein are the sole property and responsibility of the respective vendors. SirsiDynix makes no endorsement of any particular product for any purpose, nor claims responsibility for its operation and accuracy.

Additional copies of this document can be downloaded from the SirsiDynix Client Care website, [clientcare.sirsidynix.com](http://clientcare.sirsidynix.com).

[September 25, 2006] Revision date: March 24, 2008 3:15 pm

# Contents

<b>Release Notes for Web Reporter version 1.5 . . . . .</b>	<b>5</b>
System Requirements . . . . .	5
Report Services and Dynamic Enterprise Dashboarding . . . . .	6
Enhanced Dashboard Interactivity for Report Services Documents . . . . .	7
Configuration . . . . .	10
Horizon Setup for New Web Reporter 1.5 Reports . . . . .	10
Changing the HTML Path . . . . .	10
Reports Available in Web Reporter . . . . .	14
General changes to Reports . . . . .	43
General Changes to Attributes . . . . .	43
General Changes to Consolidations . . . . .	49
General Changes to Custom Groups . . . . .	49
General Changes to Drill Templates . . . . .	49
General Changes to Facts . . . . .	50
General Changes to Filters . . . . .	50
General Changes to Folders . . . . .	53
General Changes to Metrics . . . . .	53
General Changes to Prompts . . . . .	54
General Changes to Search Objects . . . . .	54
General Changes to SQL Reports . . . . .	54
General Changes to Tables . . . . .	54
General Changes to Table Aliases . . . . .	55



# Release Notes for Web Reporter version 1.5

## System Requirements

Make sure your system meets the following requirements.

### Web Reporter Server

Minimum Specifications
Windows Server 2003 Standard or Enterprise Edition
1 2.0 GHz Xeon processor
2 GB of RAM
2 GB available hard drive space

You must have a dedicated server for Web Reporter. Your Web Reporter server requirements may change, based on the number of users. (For example, additional processors may be needed.) If you have questions about this server configuration, contact your SirsiDynix Sales Representative.

## Web Reporter Administration Workstation

<b>Minimum Specifications</b>
1 GHz or higher Pentium-compatible processor
1 GB of RAM
512 MB available hard drive space
<b>Recommended</b>
1 GHz or higher Pentium-compatible processor
2 GB of RAM
2 GB available hard drive space
<b>Recommended Browsers</b>
Microsoft Internet Explorer 7.0
Microsoft Internet Explorer 6.0 SP2
Microsoft Internet Explorer 6.0 SP1
Mozilla Firefox 2.0
Netscape 7.2

## Web Reporter Staff Web Browser

<b>Recommended Browsers</b>
Microsoft Internet Explorer 7.0
Microsoft Internet Explorer 6.0 SP2
Microsoft Internet Explorer 6.0 SP1
Mozilla Firefox 2.0
Netscape 7.2

## Horizon Database Server

<b>Minimum Requirements</b>
Horizon version 7.4.1 or later

## Report Services and Dynamic Enterprise Dashboarding

MicroStrategy 8.1 allowed SirsiDynix to include Dynamic Enterprise Dashboards through Report Services with the edition of expanded formatting and interactive capabilities documents.

Report Services documents can be developed and edited by MicroStrategy Web Professionals and MicroStrategy Desktop Designers.

Except where noted, all of the functionality described below requires licensing of MicroStrategy Report Services as well as the appropriate MicroStrategy Web or Desktop license.

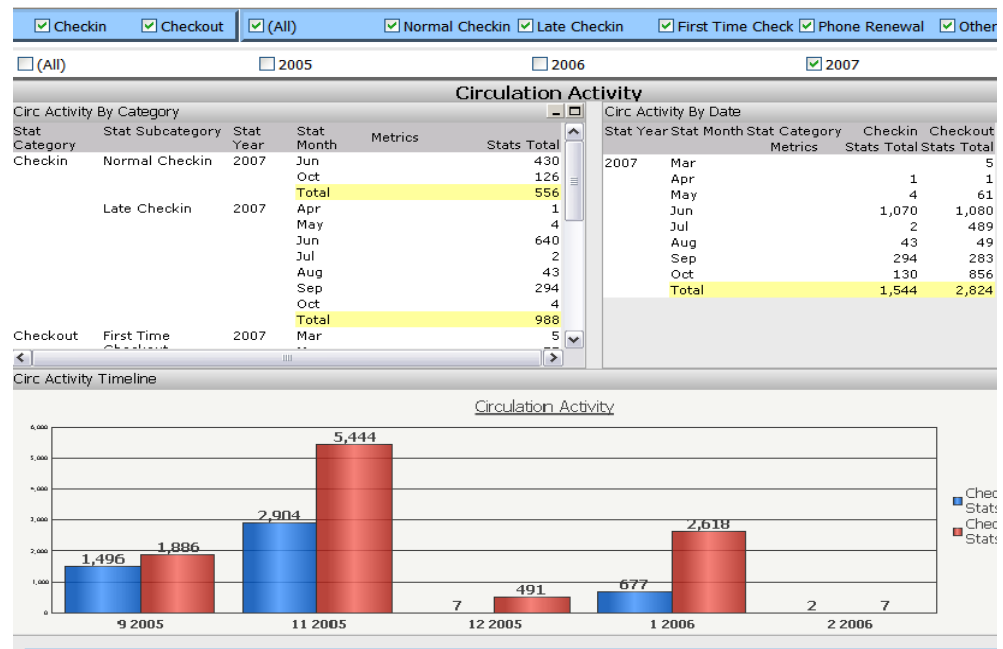
## Enhanced Dashboard Interactivity for Report Services Documents

### Full Screen Mode

In full screen mode the standard MicroStrategy header, links, navigation bar, and menus are hidden, allowing the entire screen to be devoted to the current dashboard. Users can use the F12 key or a simple click on a toolbar button to toggle between full screen mode and the normal view.

### Multi-Panel Documents

Panels are similar to individual pages or “worksheets” within a document. Multiple panels can be layered within a single document providing intuitive organization of large volumes of information and easy navigation for business users. Document objects such as grids, graphs, text, images, and so on can be placed independently on panels.



Panels can be stacked upon each other, so an analyst can use a selector to navigate through the panels on a document.

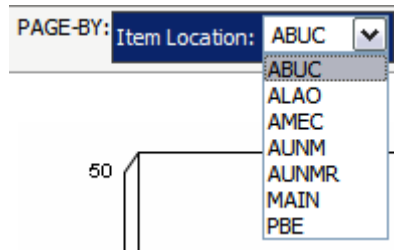
Borrower Location	Borrower Count	Valid Borrower Registration Count	Expired Borrower Count	Created Borrowers Current Month	Renewed Borrower Current Month
ABUC	6	2	4	0	
ALAO	76	76	0	0	
AUNM	47	30	17	0	
MAIN	7,181	6,310	871	0	
PBE	981	252	739	0	
PBM	1	0	1	0	
PBN	1,335	354	981	0	
PBS	2,237	1,215	1,022	0	
PBW	1,953	1,281	672	0	
PCEC	717	571	146	0	
PCPC	52	48	4	0	
SEED	274	167	107	0	
SELN	44	25	19	0	
SEWA	5	2	3	0	
SHAN	60	34	26	0	
SMMK	4,375	2,565	1,810	0	

## Selectors

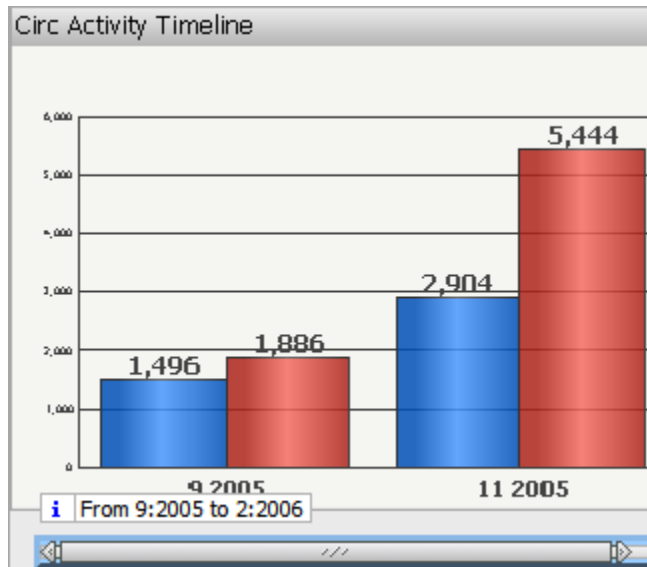
Selectors allow users to navigate between panels and to interact directly with the grids, graphs, attributes, and metrics displayed on the screen. A user's selection can change the panel that is displayed, filter or "page-through" grids and graphs, or change the metric display. A report user can make a simple selection from a variety of common selector styles such as:

- Drop-down
- List Box
- Slider
- Radio Buttons
- Check Boxes
- Buttons
- Links

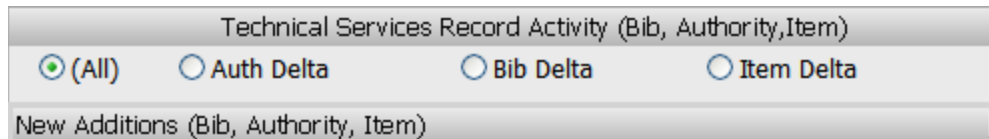
**Drop-down**



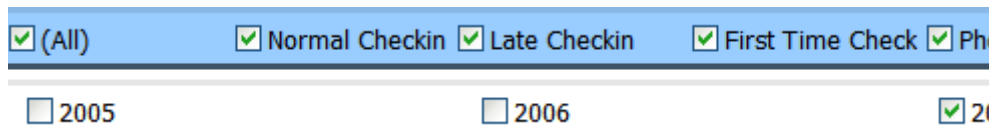
**Slider**



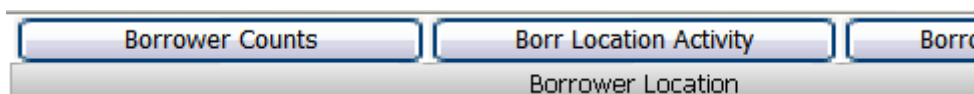
**Radio Buttons**



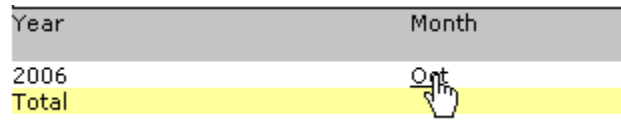
**Check Boxes**



**Buttons**



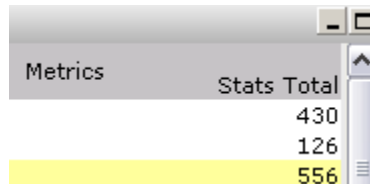
## Links



Year	Month
2006	Oct
Total	

## Grid/Graph Interactivity within Documents

- A new setting (quick switch) allows users to toggle instantly between grid and graph views inside a Report Services document with a single mouse click.
- Within a Report Services document, each grid and graph can contain a separate title bar which can be used to maximize or minimize the grid/graph within the Report Services document.



Metrics	Stats Total
	430
	126
	556

## Advanced Visualizations with Adobe Flash

All MicroStrategy Report Services documents can be rendered in Adobe Flash for enhanced interactivity, animations, and visualizations.

## Configuration

### Horizon Setup for New Web Reporter 1.5 Reports

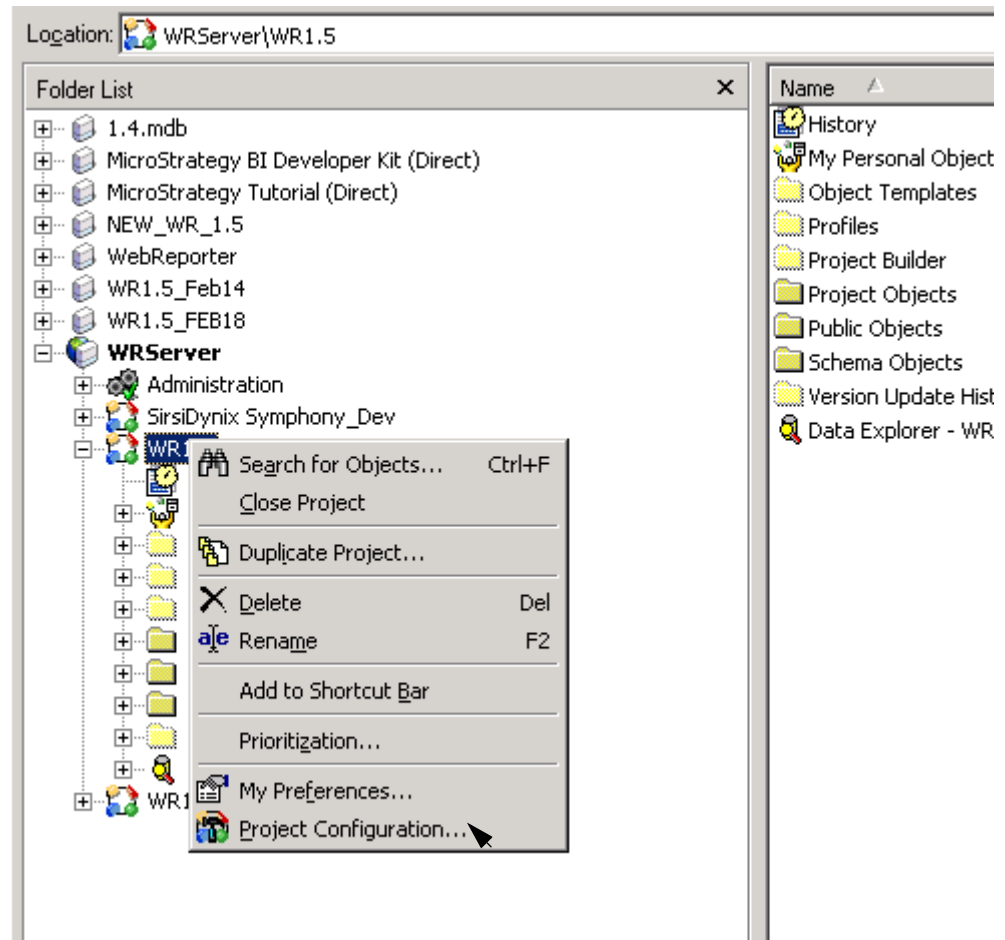
Web Reporter 1.5 provides the ability to run reports from data that is not, by default, recorded in the Horizon database. These reports are based on History of Requests or on Top Circulating Titles. In order to use these reports, some Horizon setup must be done so that the data is present.

For more information, see “Setting Up the History of Requests” and “Setting Up the Top Circulating Items List” in the Horizon 7.4 update to the *Circulation Setup Guide*.

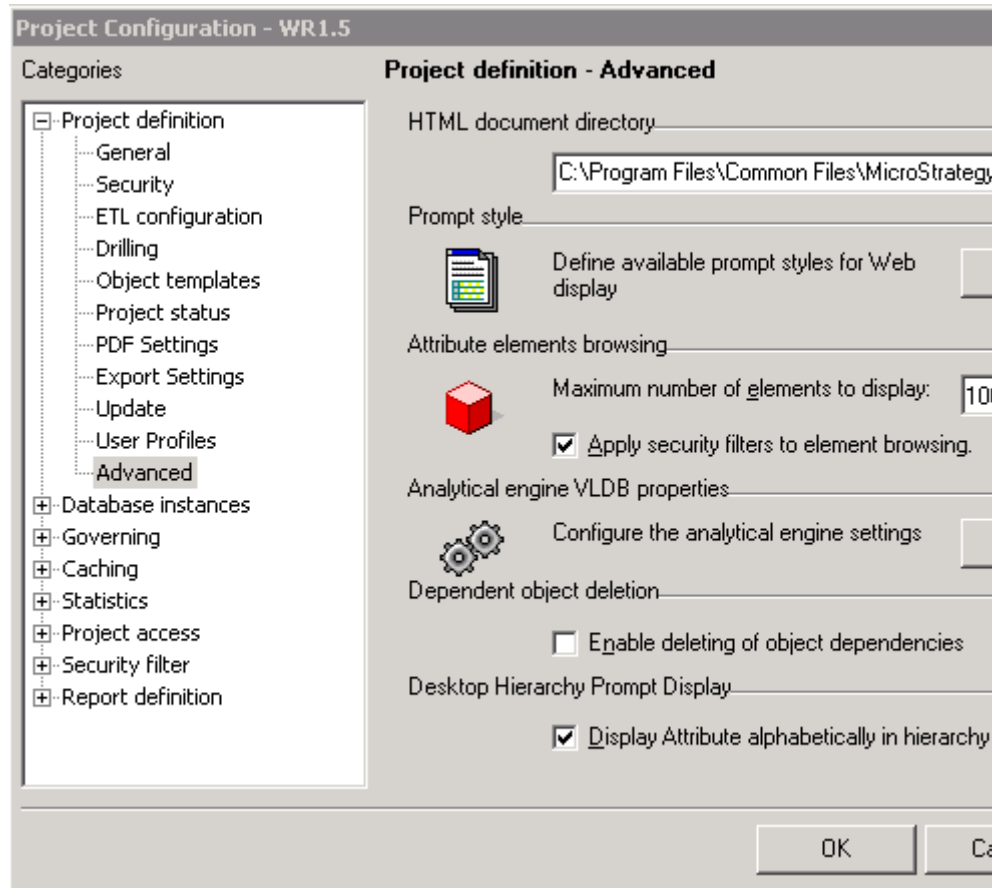
### Changing the HTML Path

Before Web Reporter will work on SirsiDynix Horizon version 7.4.1, the HTML path for the data must be changed, as follows.

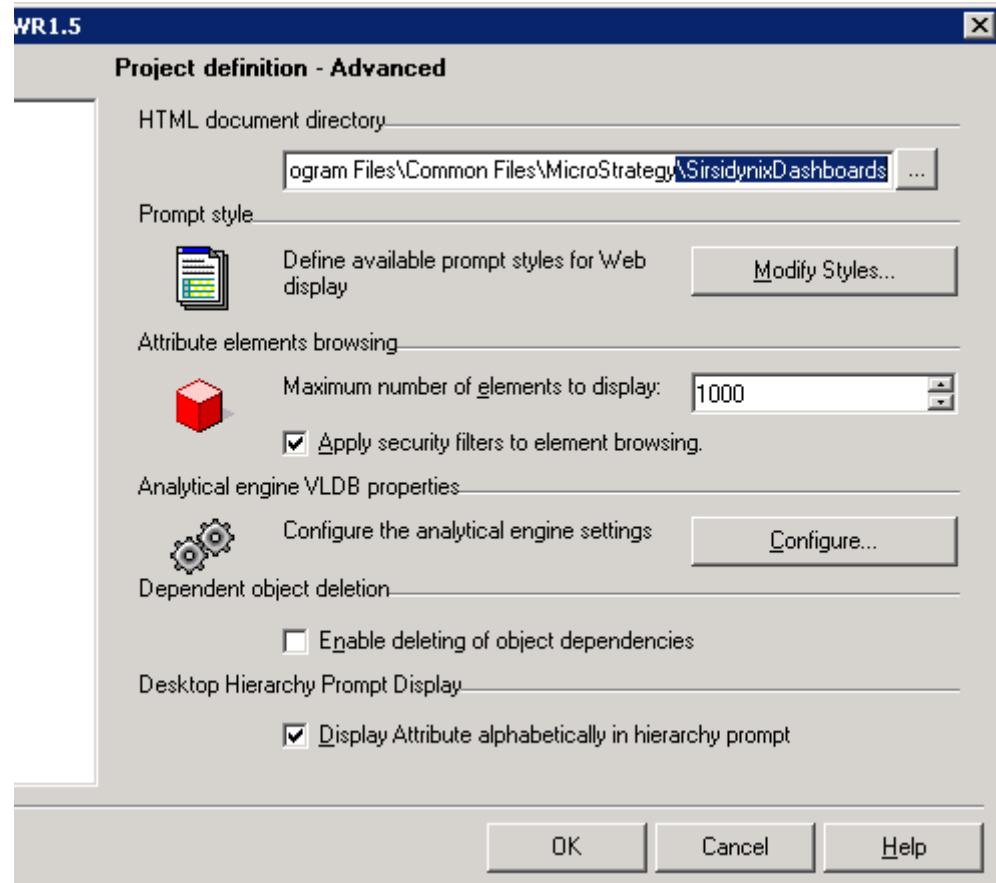
- 1 Right-click the project folder and select Project Configuration.



- 2 Select Advanced under Project definition.



- 3 Change the end of the HTML document directory field to \SirsidynixDashboards.



More information about advanced configuration can be found by selecting the Web Reporter Help button and navigating to the topic “**Project Configuration Editor: Project Definition category, Advanced**”.

## Reports Available in Web Reporter

Version 1.5	Version 1.4	Folder	Report Name	Description	Notes for Version 1.5
x	x	Acquisitions	ACQ Lines Ordered / Received	(196) Graph of PO Lines orders & Received. Paged By Location. Goes back 18 months by default.	
x	x	Acquisitions	Amount Spent by Budget and Material Type	(211S) Amount spent by budget and POLSTAT (material type) prompted by budget and year. Only PO Lines assigned a POLSTAT are counted in this report.	
x	x	Acquisitions	Invoices By Statement Type	(423) Statement Information By Statement Type. Subtotaled By Statement Type & Vendor. Optional Prompts for Statement Dates & Types.	
x	x	Acquisitions	Voucher Report	(210S) Shows total voucher amounts, amount attributed to each budget, and the number of items purchased. Prompted for voucher creation date range, and po location.	
x	x	Acquisitions > Budget Reports	Budget Amounts By Vendor	(405) Cross Tabulation Of Vendors & Budgets. Prompt For Budgets	Added drill maps from vendor code and budget code to PO line details. Added drill map from vendor to PO line detail info.
x	x	Acquisitions > Budget Reports	ACQ Stats - Items Received by Budget	(136) Count of items received by budget. Filter by stat year and month.	
x	x	Acquisitions > Budget Reports	ACQ Stats - Items Received by Budget FY	(157) Count of items received by budget. Filter by fiscal year and month.	
x	x	Acquisitions > Budget Reports	Acquisitions Fund Status	(001) List of budget accounts with original budget, encumbered, expended, and remaining amounts and percentages. Filter by year and account.	

Version 1.5	Version 1.4	Folder	Report Name	Description	Notes for Version 1.5
x	x	Acquisitions > Budget Reports	Budget Account Transactions	(130) List of budget transactions, including budget, transaction date and time, user, amount type, transaction source, note, prior amount, and transaction amount. Filter by transaction date range, budget, and user.	The time column is automatically modified based on the modified Budget Transaction Time attribute. The sort was changed to Budget; Amt Type; Date; Time. Filters replaced by a prompt that allows selection of filters.
x	x	Acquisitions > Budget Reports	Budget Hierarchy	(142) List of budget accounts, including parent description, original budget amount, encumbered amount, expended amount, and remaining balance. Filter by budget filters. Paged by parent account.	
x	x	Acquisitions > Budget Reports	Encumbrances by Budget Account	(111) List of encumbrances by budget account, including title, unit price, and amount. Filter by budget filters. Paged by budget.	Drill maps added as options.
x	x	Acquisitions > Budget Reports	Expenditures by Budget Account	(112) List of expenditures by budget account, including title, unit price, and amount. Filter by budget filters. Paged by budget.	
x	x	Acquisitions > Budget Reports	Titles By Budget (Account/Year)	(407) List of Titles By Budget. Prompts For Account & Year.	
x	x	Acquisitions > PO & PR Reports	Completed POs	(002) List of PO header information, including ID, number, description, date created, date last updated, date completed, and vendor notes. Filter by PO number, description, date added, or vendor.	Added column for count of lines (on PO) and drill map from PO number to statement information.
x	x	Acquisitions > PO & PR Reports	Invoiced items not CKI	(458S) This report identifies invoices with items that have not yet been checked in by the library.	

Release Notes for Web Reporter version 1.5

Version 1.5	Version 1.4	Folder	Report Name	Description	Notes for Version 1.5
x	x	Acquisitions > PO & PR Reports	PO Activity History	(143) List of PO activity types and count of transactions by date range. Filter by date range. Note: This report is based on the History Tables. Be Aware that History can be purged and your policy for that.	
x	x	Acquisitions > PO & PR Reports	PO Activity History By Location	(468) List of PO activity types and count of transactions by Vendor, Location. Filter by Date Range and Optional for Location & Vendor. Note: This report is based on the History Tables. Be Aware that History can be purged and your policy for that.	
x	x	Acquisitions > PO & PR Reports	PO Header	(003) List of PO number with PO Line Count, description, date created, date last updated, vendor code, name, and note. Filter With Options. Drill to PO Line Detail.	
x	x	Acquisitions > PO & PR Reports	PO Line Details	(004) List of PO line details, including PO number, line, ISBN, title, unit price, quantity, and extended price. Filter by PO number, creation date, description, vendor ID, code, name, contract, and contract customer description. ISBN QTY CHK	
x	x	Acquisitions > PO & PR Reports	PO Line Item Activity	(455) Report of PO Line Item Activity. Includes Counts of Items Attached; Approved; Ordered; Invoiced; Received	
x	x	Acquisitions > PO & PR Reports	PO Line Item Activity By Invoice Date	(408) PO Line Item Activity. Prompted By Invoice Date. Report Includes l activity Dates (App, Ord, Inv, Rec) Plus Unit Price, Discount, Invoice Price.	
x	x	Acquisitions > PO & PR Reports	PO Line Item Activity By Receive Date	(409) PO Line Item Activity. Prompted By Receive Date. Report Includes activity Dates (App, Ord, Inv, Rec) Plus Unit Price, Discount, Invoice Price.	

Version 1.5	Version 1.4	Folder	Report Name	Description	Notes for Version 1.5
x	x	Acquisitions > PO & PR Reports	PO Line Item Details	(005) List of PO line item details, including PO number, line, item, vendor name, contract, activity date, title, and unit price. Filter by PO and vendor options.	
x	x	Acquisitions > PO & PR Reports	PO Lines - Canceled By Cancel Date	(406) List of canceled PO line items, including vendor name, PO no, title, date, unit price, Prompted for Cancellation Date Range; Optional prompt for PO Line Details.	
x	x	Acquisitions > PO & PR Reports	PO Lines - Canceled History	(115) List of canceled or returned PO line items, including vendor name, PO no, title, date, unit price, transaction type, quantity. Filter by PO filters. Note: This Report is Based on the History Table. Rules for Purging are set locally for that.	
x	x	Acquisitions > PO & PR Reports	PO Lines - Invoiced	(113) List of invoiced PO line items, including vendor name, PO number, title, date, unit price, transaction type, quantity. Filter by PO filters.	
x	x	Acquisitions > PO & PR Reports	PO Lines By Approval Date (Encumbered )	(403) List of Approved PO Line Items that have not been invoiced including vendor name, PO number, title, date, unit price. Prompts For Approval Date Range.	
x	x	Acquisitions > PO & PR Reports	PO Lines By Invoice Date Range	(422) List of invoiced PO line items, including vendor name, PO number, title, date, unit price. Prompts For Invoice Date Range.	
x	x	Acquisitions > PO & PR Reports	PO Renewals By Renewal Date Range	(454) Report Based On The Next Renewal Date in the PO Line. Range Default Is Prior Month to 3 Months.	
x	x	Acquisitions > PO & PR Reports	PR Distribution (paged by location)	(006) List of PR distribution details, including title, author, ISBN, requesting location, status, collection, itype, price, and quantity. Filter by PR location, creation date (range), or selection list. Paged by selection list.	

Version 1.5	Version 1.4	Folder	Report Name	Description	Notes for Version 1.5
x	x	Acquisitions > PO & PR Reports	PR Distribution (paged by selection list)	(007) List of PR distribution details, including title, author, ISBN, requesting location, status, collection, itype, price, and quantity. Filter by PR location, creation date (range), or selection list. Paged by selection list.	
x	x	Acquisitions > PO & PR Reports	PR Titles by Selection List	(008) List of PR titles, including selection list, date added, title, author, ISBN, status, publisher, publication date, and unit price. Filter by creation date (range) and/or selection list.	
x	x	Acquisitions > PO & PR Reports	Statement Header Report	(009) List of statement information, including vendor, vendor invoice number, PO number, statement ID, statement date, and amount. Filter by vendor and statement options.	
x	x	Acquisitions > Vendor Reports	ACQ Order/ Receipt Stats by Vendor	(263) Count of acquisitions statistics by vendor, including stat category, vendor code, stat year, month, and Totals. Filter by stat year, and month.	
x	x	Acquisitions > Vendor Reports	ACQ Order/ Receipt Stats by Vendor FY	(264) Count of acquisitions statistics by vendor, including stat category, vendor code, stat year, month, and Totals. Filter by fiscal year and month.	
x	x	Acquisitions > Vendor Reports	ACQ Stats Spent to Unit Cost Ratio	(401) Acquisitions statistics by Y/M vendor for comparison of Unit Price (Totals) To Extended Amounts actually Spent. (Does not include extra charges)	
x	x	Acquisitions > Vendor Reports	Encumbrances by Vendor	(107) List of encumbrances by vendor, including title, unit price, budget amount, and vendor discount price. Filter by PO line filters. Paged by vendor name.	
x	x	Acquisitions > Vendor Reports	Encumbrances by Vendor Contract	(109) List of encumbrances by vendor contract, including title, unit price, budget amount, and vendor discount price. Filter by PO line filters. Paged by vendor contract.	

Version 1.5	Version 1.4	Folder	Report Name	Description	Notes for Version 1.5
x	x	Acquisitions > Vendor Reports	Expenditures by Vendor	(108) List of expenditures by vendor, including title, unit price, budget amount, and vendor discount price. Filter by PO line filters. Paged by vendor name.	
x	x	Acquisitions > Vendor Reports	Expenditures by Vendor Contract	(110) List of expenditures by vendor contract, including title, unit price, budget amount, and vendor discount price. Filter by PO line filters. Paged by vendor contract.	
x	x	Acquisitions > Vendor Reports	Title Lists By Vendor	(105) List of titles ordered by vendor, including title, unit price & quantity.	
x	x	Acquisitions > Vendor Reports	Vendor Contact Information	(010) List of vendor information, including name, code, and contact information. Filter by vendor code, ID, name, customer number, contract description, contract customer number, or type.	
x	x	Acquisitions > Vendor Reports	Vendor Details	(011) List of vendor information, including name, address, and contact information. Filter by vendor code, ID, name, customer number, contract description, contract customer number, or type.	Reformatted.
x	x	Administration	Add & Delete Activity	(459) Counts of New & Deletes Statistics; Grouped By Auth, Bib, Item, Borrower; Subgrouped by Add/Deletes / Subgrouped by Manual/Batch.	
x	x	Administration	Calendar	(470) List of Normal Hours & Exceptions. Prompt for Location & Exception Date Range. (Designed to work best as a PDF)	
x	x	Administration	Calendar Exceptions List	(471) List of Location Calendar Exceptions. Prompted By Location and Date Range. This report is used for the Calendar Document so should not be modified. Make a copy instead.	

Version 1.5	Version 1.4	Folder	Report Name	Description	Notes for Version 1.5
x	x	Administration	Calendar Week List	(472) List of Location Calendar Week Opening & Closing Hours. Prompted By Location. This report is used for the Calendar Document so should not be modified. Make a copy instead.	
x	x	Administration	Circulation Privilege Report	(449S) Report of Circulation Privileges	
x	x	Administration	Circulation Parameter Report	(450S) Report of Circulation Parameters	
x	x	Administration	Stats By Fiscal Year Definitions	(457) Consolidation for Months July 2004 to June 2005	
x	x	Administration	User Count by Location	(172) Count users by location and type. Grid and Graph	
x	x	Administration	User List	(173) List user information for all logins at specified locations	
x	x	Administration > Data Integrity Queries	Circ Records for Items Not Out	(174) All items that have a record in the circulation table should have a status of 'o'. This report should not return any results. If results are found, see resolution #541352 in log express	
x	x	Administration > Data Integrity Queries	CR Blocks for Items Not CR	(175) Each CR block should correspond to an item that has a status of 'cr'	
x	x	Administration > Data Integrity Queries	Data Integrity Summery	(180) Combination of all the Data Integrity Reports	
x	x	Administration > Data Integrity Queries	Hold Blocks for Items Not On Hold	(176) Each hold block should correspond to an items record that has a status of 'h'	
x	x	Administration > Data Integrity Queries	Lost blocks for Items Not Lost	(177) Each lost block should correspond to an item with the status of 'L' or 'M'	
x	x	Administration > Data Integrity Queries	Request in Transit, Item Not	(178) For each item in transit to fill a hold, both the request record and the item record should have transit statuses	

Version 1.5	Version 1.4	Folder	Report Name	Description	Notes for Version 1.5
x	x	Administration > Data Integrity Queries	Request On Hold, Item Not	(179) When an item is on hold, but the request record and the item record should have an 'on hold' status	
x	x	Cataloging	Ad Hoc Tech Services Adds/Deletes 1	(012) Count of Stat Summary Auth, Bib, Items Add/Delete Activity- Prompt for Location Only	
x	x	Cataloging	Ad Hoc Tech Services Adds/Deletes 2	(414) Count of Stat Summary Auth, Bib, Items Add/Delete Activity- Prompt for Location, Year, Month	
x	x	Cataloging	Authority List (1xx tags only)	(013) List of selected authority headings, including authority ID, tag number, authority text, and the number of times each heading is used as an author, subject, or series. Filter by heading text or authority ID.	
x	x	Cataloging	Authority List (all tags)	(014) List of selected authority headings, including authority ID, tag number, authority text, and the number of times each heading is used as an author, subject, or series. Filter by heading text or authority ID.	
x	x	Cataloging	Batch Item Discards	(132) List of items discarded in batch mode, including item barcode, collection, call number, itype, price, location, discard date, and cataloging source. Filter by item location and discard date (range).	Added Location filter. Report description states filtered by location; however, that filter was not in the report.
x	x	Cataloging	Bib Status	(015) List of title and bib ID by bib status. Filter by bib status.	
x	x	Cataloging	Bib Status (count)	(016) Count of bibs for each bib status.	
x	x	Cataloging	Bibs with No Items	(017) List of bib ID, title, and status. Filter by bib status.	
x	x	Cataloging	Bibs with No Items No filter	(162) List of bib ID, title, and status.	
x	x	Cataloging	Delta Authority	(199) Graph of New Auth Stats. Paged By Location. Goes back 18 months by default.	

Version 1.5	Version 1.4	Folder	Report Name	Description	Notes for Version 1.5
x	x	Cataloging	Delta Bib	(200) Graph of New Bib Stats. Paged By Location. Goes back 18 months by default.	
x	x	Cataloging	New Authority Forms (1xx tags)	(018) List of selected authority headings, including authority ID, tag number, authority text, and the number of times each heading is used as an author, subject, or series. Filter by date creation (range).	
x	x	Cataloging	New Authority Forms (all tags)	(019) List of selected authority headings, including authority ID, tag number, authority text, and the number of times each heading is used as an author, subject, or series. Filter by date creation (range).	
x	x	Cataloging	New Bib Records and Associated Subjects	(456) List Sorted by Subjects/ Titles Added by a Specified Date Range. Note: Records without Subjects or Dates are not included in this report.	
x	x	Cataloging	New Records (Item Level) and Associated Subjects	(467) List Sorted by Subjects/ Titles Added by a Specified Date Range. Note: Records without Subjects or Dates are not included in this report.	
x	x	Cataloging	New Titles by Series (specified date range)	(020) List of titles added by series within a specified date range. Filter by bib creation date and series title.	
x	x	Cataloging	New Titles by Subject and Date Range	(114) List of titles added within the specified date range, including title, bib ID, subject, and bib creation date. Filter by bib creation date range and subject authority text (optional).	
x	x	Cataloging	Overview - Professional Services	(305) Summary of Cataloging and Acquisitions Data	
x	x	Cataloging	Technical Services Activity	(138) Count of technical service activities including bibliographic, authority, and item records added and deleted. Filter by month and year.	

Version 1.5	Version 1.4	Folder	Report Name	Description	Notes for Version 1.5
x	x	Cataloging	Technical Services Activity FY	(158) Count of technical service activities including bibliographic, authority, and item records added and deleted. Filter by month and year.	
x	x	Cataloging	Titles Added by Date (range)	(021) List of titles added by date, including title, ISBN, and bib ID. Filter by date range.	
x	x	Cataloging	Titles By Subject	(022) List of titles by subject. Includes subject, title, and bib ID. Filter by entering the characters of the subject. For example, entering "fish" will return all subject headings containing the letters "fish".	
x	x	Cataloging	Value of Collection	(419) Lists the Collection & the value of specified collections for a specified location. It is filtered by location call and collection. The value does not include items that are lost, missing, missing inventory, trace, or claims returned.	
x		Cataloging	Collection Value	(541) Report for Collection Value. Evaluates items with assigned prices and uses default collection values. Optional prompt for Location & Collection.	Added.
x	x	Circulation > Block Reports	Block Amounts owed by Borrower Location	(139) List of total amounts owed by borrower location. Filter by borrower location.	
x	x	Circulation > Block Reports	Block Amounts owed by Debt Location	(402) List of total amounts owed by debt location. Filter by debt location.	
x	x	Circulation > Block Reports	Blocks by Borrower (paged by borrower location)	(023) List of borrower and block information, including borrower name, ID, Second ID, block date, type, and amount. Filter by block filters. Paged by borrower location.	

Release Notes for Web Reporter version 1.5

Version 1.5	Version 1.4	Folder	Report Name	Description	Notes for Version 1.5
x	x	Circulation > Block Reports	Blocks by Borrower with Title and Item Barcode (paged by Borrower location)	(163) List of borrower and block information, including borrower name, ID, location, title, item barcode, block date, type, and amount. Filter by block type and item CKO location. Paged by item CKO location.	
x	x	Circulation > Block Reports	Fines and Fees by Borrower (paged by location)	(025) List of fine and fee blocks by location and borrower, including borrower name, ID, phone number, btype, block type, and amount owed. Filter by borrower and block options. Paged by borrower location.	
x	x	Circulation > Block Reports	Fines and Fees by Borrower, Item, and Title (paged by location)	(026) List of fine and fee blocks by location and borrower, including borrower name, ID, phone number, btype, block type, and amount owed. Filter by borrower and block options. Paged by borrower location.	
x	x	Circulation > Block Reports	Payments Detail	(147) List of Fees paid. Prompt for Fee Filters.	
x	x	Circulation > Block Reports	Payments Detail (paged by date)	(148) List of Fees paid. Prompt for Fee Filters. Paged By Date.	
x	x	Circulation > Block Reports	Summary of Fines and Fees by Borrower	(027) List of borrower and block amount. Sorted by borrower location, then by amount owed. Filter by block options.	
x		Circulation > Borrower Reports	Borrower Registration & Activity Document	(507) Registration counts. Prompted by location	Added
x	x	Circulation > Borrower Reports	Borrower Additions and Deletions	(201) Graph of Borrower Adds & Deletes. Default back 18 months.	
x	x	Circulation > Borrower Reports	Borrower Address	(028) List of borrower address details. Filter by borrower options.	
x	x	Circulation > Borrower Reports	Borrowers Added by Date Range (count)	(061) Count of borrowers added by date range, including borrower registration date and count. Filter by registration date range and borrower location.	

Version 1.5	Version 1.4	Folder	Report Name	Description	Notes for Version 1.5
x	x	Circulation > Borrower Reports	Borrowers Added or Renewed by Date Range (count)	(169) Count of borrowers added by date range, including borrower registration date and count. Filter by registration date range and borrower location.	
x	x	Circulation > Borrower Reports	Borrowers and Items Out	(030) List of borrower name, location, CKO location, due date, and title. Filter by borrower and item filters.	
x	x	Circulation > Borrower Reports	Borrowers Between Two Ages	(031) List of borrowers, ID, birth date, age, location, and btype. Filter by minimum and maximum age and borrower filters.	
x	x	Circulation > Borrower Reports	Borrowers by Btype (count)	(029) Count of borrowers for each borrower type. Filter by location, year, and month. (paged by location).	
x		Circulation > Borrower Reports	Borrower Activity Dashboard	(510) Borrower activity counts. Dynamic filtering by location.	Added
x		Circulation > Borrower Reports	Borrower Activity with BTYPES Dashboard	(511) Borrower activity counts. Dynamic filtering by location and BTYPE.	Added
x	x	Circulation > Borrower Reports	Borrowers by Expiration Date (range)	(032) List of borrower name, ID, barcode, btype, location, and expiration date. Filter by borrower options.	
x	x	Circulation > Borrower Reports	Borrowers by Expiration Date (range) (paged by location)	(033) List of borrower name, ID, barcode, btype, location, and expiration date. Filter by borrower options. Paged by location.	
x	x	Circulation > Borrower Reports	Borrowers by Last CKO Date (range)	(034) List of borrower name, ID, barcode, last CKO date, and location. Filter by borrower options.	
x	x	Circulation > Borrower Reports	Borrowers by Last CKO Date (Range) (Paged by Location)	(035) List of borrower name, ID, barcode, last CKO date, and location. Filter by borrower options.	
x	x	Circulation > Borrower Reports	Borrowers by Location	(036) Graph of borrower counts by location.	

Version 1.5	Version 1.4	Folder	Report Name	Description	Notes for Version 1.5
x	x	Circulation > Borrower Reports	Borrowers by Location & Btype (count)	(404) Count of borrowers by btype registered for each location. Filter by location & Btype	
x	x	Circulation > Borrower Reports	Borrowers by Location (count)	(037) Count of borrowers registered for each location. Filter by location.	
x	x	Circulation > Borrower Reports	Borrowers by Postal Code	(038) Graph of the number of borrower addresses per postal code and location. Filter by location.	
x	x	Circulation > Borrower Reports	Borrowers by Postal Code (count)	(039) Count of the number of borrower addresses per postal code and location. Filter by location.	
x	x	Circulation > Borrower Reports	Borrowers by Postal Code (count) (paged by location)	(040) Count of the number of borrower addresses per postal code and location. Filter by location. Paged by borrower location.	
x	x	Circulation > Borrower Reports	Borrowers by Postal Code and Borrower Location (count)	(042) Count of the number of borrower addresses per postal code and location. Filter by location.	
x	x	Circulation > Borrower Reports	Borrowers by Postal Code and Location (count)	(041) Graph of the number of borrower addresses per postal code and location. Filter by location.	
x	x	Circulation > Borrower Reports	Borrowers with no address	(441S) - Report of borrowers with no address, filtered by location	
x	x	Circulation > Borrower Reports	Borrowers with no barcode	(442S) - Report of borrowers with no barcode, filtered by location.	
x	x	Circulation > Borrower Reports	Borrowers with no bstat	(443S) - Report of borrowers with no BSTAT, filtered by location	
x	x	Circulation > Borrower Reports	Borrowers with no phone	(444S) - Report of borrowers with no phone, filtered by location.	
x	x	Circulation > Borrower Reports	Improper PhoneFormat (All #s)	(180) - Report all phone numbers that don't meet the following formats: xxx-xxx; (xxx) xxx-xxxx; xxx-xxx-xxxx	

Version 1.5	Version 1.4	Folder	Report Name	Description	Notes for Version 1.5
x	x	Circulation > Borrower Reports	Improper Phone Format (Main # only)	(181) - Report all phone numbers that don't meet the following formats: xxx-xxx; (xxx) xxx-xxxx; xxx-xxx-xxxx	
x	x	Circulation > Borrower Reports	Number of CKOS by Btype (Paged by Location)	(413) Summary of total number of checkouts by borrower btype (historical)	
x	x	Circulation > Borrower Reports	Problem Borrower Summary	(446S) Problem Borrower Summary (Paged by location). Borrowers with no Phone, Barcode, and address. Paged by location, sorted by name, then problem.	
x	x	Circulation > Home Service Reports	HS Borrower List of Items Out	(150) List of items currently checked out to home service borrowers. Paged by borrower.	
x	x	Circulation > Home Service Reports	HS Borrower Log	(151) List of all items checked out by home service borrowers. Paged by borrower.	
x	x	Circulation > Home Service Reports	HS Borrower Summary	(156) Combined List of Items Currently Checked Out and the Borrower Log For Home Service Borrowers	
x	x	Circulation > Home Service Reports	HS Summary Borrower Log	(154) List of all items checked out by home service borrowers. Base report for 156	
x	x	Circulation > Home Service Reports	HS Summary Items Out	(155) List of items currently checked out to home service borrowers. Base report for 156	
x	x	Circulation > Home Service Reports	HS Visits Due	(152) List of home service visits due. Paged by route. Base report for report 153.	
x	x	Circulation > Home Service Reports	Visits Due	(153) List of Home Service Visits Due. Paged By Borrower.	
x	x	Circulation > Item Reports	Average Value of Collection	(460) Average value of collection. Shows the average item price for a given collection and location. This report is filtered by location and collection. It includes collection, collection description, item location, and average item price.	
x	x	Circulation > Item Reports	Claimed Return Report	(170) List of items with status of Claimed Returned	

Version 1.5	Version 1.4	Folder	Report Name	Description	Notes for Version 1.5
x	x	Circulation > Item Reports	Collection Age	(119) Count of items by collection and age. Filter by location and/or collection code.	
x	x	Circulation > Item Reports	Collection Age - Simple	(184) - Count of items by collection and age. Filter by location and/or collection code.	
x	x	Circulation > Item Reports	Dusty Book List	(118) Items that may not have been used recently, including item barcode, title, collection, call number, itype, date added, last checked out date, and use total. Filter by item filters. Paged by location. Note: This report was renamed to Dusty Book List.	
x	x	Circulation > Item Reports	Dusty Book List - At least 1 checkout	(231) Items that may not have been used recently, including item barcode, title, collection, call number, itype, date added, last checked out date, and use total. Filter by item filters. Paged by location.	Added drill maps to title and item detail.
x	x	Circulation > Item Reports	Item Status (count)	(043) List of item status descriptions and the number of items assigned to that status within the specified date range. Filter by item status, item location, and date range. Paged by item location.	
x	x	Circulation > Item Reports	Item Status (count) (excluding IN and OUT)	(044) List of item status descriptions and the number of items assigned to that status for all statuses other than "checked in" and "checked out". Filter by location. Paged by location.	
x	x	Circulation > Item Reports	Item Status (Lost Items)	(045) List of items with status of "Lost" or "Lost Recall", including collection code, call number, item loan type, item status, the date the status was set, and title. Filter by location and the date the status was set (range).	
x	x	Circulation > Item Reports	Item Status Count - Graph	(046) Graph of item status descriptions and the number of items assigned to that status for all statuses other than "checked in", "checked out", "closed stack", and "reserve". Filter by location.	

Version 1.5	Version 1.4	Folder	Report Name	Description	Notes for Version 1.5
x	x	Circulation > Item Reports	Items by Collection (count)	(047) Count of items by collection code. Filter by location and collection codes. Paged by location.	Added a second filter on collection to match the report description. Count of items by collection code. Filter by location and collection codes. Paged by location.
x	x	Circulation > Item Reports	Items by Collection (list) (paged by location)	(048) List of items by collection, including item barcode, bib ID, collection code, itype code, call number, and title. Added pubdate and CKO.	Modified filters to match description. Report was filtered by specific Status but was not a prompt.
x	x	Circulation > Item Reports	Items by Collection and Status (count)	(049) Count of items by collection and item status. Filter by item location, collection code, and item status.	
x	x	Circulation > Item Reports	Items by item status (list)	(412) List of items with a particular status, filtered by location and item status. Paged by location. Includes author, title, bib id, call, collection, item status and use count.	
x	x	Circulation > Item Reports	Items by Itype (count)	(050) Count of items by item loan type. Filter by location and itype. Paged by location.	
x	x	Circulation > Item Reports	Items by Itype (list)	(051) List of items by item loan type, including item barcode, bib ID, collection code, itype code, call number, and title. Filter by location and itype. Paged by location.	
x	x	Circulation > Item Reports	Items in Transit	(052) List of items in transit	
x	x	Circulation > Item Reports	Items Overdue (count)	(141) Count of items overdue. Filter by location.	
x	x	Circulation > Item Reports	Items overdue more than 'N' Days	(053) Items overdue more than a specified number of days. Filtered by location and number of days overdue.	

Version 1.5	Version 1.4	Folder	Report Name	Description	Notes for Version 1.5
x	x	Circulation > Item Reports	Requested Newly Acquired Items	(135) - Item status of "newly acquired" or 'in cataloging' that have are requested.	(135S) Item status of "newly acquired" or "in cataloging" that are requested. "S" identifies as a SQL report.
x	x	Circulation > Item Reports	Shelf List	(429) List of items specified by the Filter.	
x	x	Circulation > Item Reports > Discards	Discard List	(425) List of Discarded Materials. Prompt (Not Required) Is for first 3 call characters [Design is for Dewey Class Results.]	
x	x	Circulation > Media Scheduling Reports	Media Hold Slip	(187) Media Hold Slip. Prompts for Pickup Date Range & Item Location	
x	x	Circulation > Media Scheduling Reports	Media Scheduling Requests	(185) - Media Scheduling requests between two dates	(185S) Media scheduling requests between two dates. "S" identifies as a SQL report.
x	x	Circulation > Request/ Recall Reports	Age Of Open Requests	(440S) - Age of open requests by location. SQL report, you may not add additional elements to this report unless you alter the SQL therein.	
x	x	Circulation > Request/ Recall Reports	Hold Items in Transit - Fill Location	(054) List of items in transit to fill requests, including pickup location, item barcode, title, and borrower name. Filter by fill location. Paged by fill location.	
x	x	Circulation > Request/ Recall Reports	Hold Items in Transit - Pickup Location	(055) List of items in transit to fill requests, including pickup location, item barcode, title, and borrower name. Filter by pickup location. Paged by pickup location.	

Version 1.5	Version 1.4	Folder	Report Name	Description	Notes for Version 1.5
x	x	Circulation > Request/ Recall Reports	Hold Shelf Expired/ Canceled	(129) List of items on the hold shelf with a canceled or expired status, including borrower ID, name, title, hold expiration date, and request status. Filter by pickup location.	
x	x	Circulation > Request/ Recall Reports	Hold Shelf List	(128) List of items on the hold shelf, including request ID, borrower ID, telephone number, name, title, hold expiration date, and request status. Filter by pickup location and notification method.	
x	x	Circulation > Request/ Recall Reports	Outstanding Requests	(056) List of titles with outstanding requests, including title, bib ID, request ID, borrower name, ID, and request expiration date. Filter by pickup location (required) and bib ID (optional). Paged by pickup location.	
x	x	Circulation > Request/ Recall Reports	Purchase Alert	(447S) Purchase Alert, Paged by Pickup Location. Note: Formerly Report #131.	A page by was added to match the description.
x	x	Circulation > Request/ Recall Reports	Recalled Items	(057) List of recalled items, including item location, barcode, bib ID, title, borrower ID, name, and location.	
x	x	Circulation > Request/ Recall Reports	Request Count by Bib	(058) List of bib ID, title, and total request count.	
x	x	Circulation > Request/ Recall Reports	Request Pull List	(127) List of items on the current pull list, including bib ID, item barcode, and title. Filter by fill location. Paged by fill location.	
x	x	Circulation > Request/ Recall Reports	Requests with no available items	(453S) Requests with no available Items Filtered by pickup location. Paged by pickup location.	
x	x	Circulation > Request/ Recall Reports History (7.4)	Request Analysis by Pickup Location	(188) Shows average request age, average transit days, average hold shelf age, and the total requests resolved.	

Version 1.5	Version 1.4	Folder	Report Name	Description	Notes for Version 1.5
x	x	Circulation > Request/ Recall Reports History (7.4)	Request Analysis by Pickup Location (Graph)	(189) Graph shows average request age, average transit time, and average hold shelf time.	
x	x	Circulation > Request/ Recall Reports History (7.4)	Requests by Collection	(190) Show number of requests placed by month and collection	
x	x	Circulation > Request/ Recall Reports History (7.4)	Requests Placed Change by Month	(191) Requests Placed by pickup location by month showing this months totals compared to last month, previous month, and percent change.	
x	x	Circulation > Request/ Recall Reports History (7.4)	Requests Resolved Change by Month	(197) Requests resolved by request location showing this month and last month totals, and percent change.	
x	x	Circulation > Statistical Reports	Bib Usage Report	(306) Count of Bib Usage.	
x	x	Circulation > Statistical Reports	Blocks Comparison: Bstat	(124) Count of current blocks by bstat. Filter by borrower location and block type. Paged by borrower location.	
x	x	Circulation > Statistical Reports	Blocks Comparison: Btype	(123) Count of current blocks by borrower type. Filter by borrower location and block type. Paged by borrower location.	
x	x	Circulation > Statistical Reports	Blocks Comparison: Itype	(125) Count of current blocks by itype. Filter by borrower location and block type. Paged by borrower location.	
x	x	Circulation > Statistical Reports	Checkout and Checkin Stats by Month	(076) Count of checkins and checkout by specified month(s). Filter by stat month and year Use this report to create custom fiscal year report.	
x	x	Circulation > Statistical Reports	Circulation Statistics (Daily)	(059) List of statistical counts in circulation categories, including checkout, checkin, and request. Filter by location, stat category, year, and month.	

Version 1.5	Version 1.4	Folder	Report Name	Description	Notes for Version 1.5
x	x	Circulation > Statistical Reports	Circulation Statistics (Monthly)	(060) List of statistical counts in circulation categories, including checkout, checkin, and request. Filter by location, stat category, year, and month.	
x	x	Circulation > Statistical Reports	Circulation Statistics Adhoc Style	(192) Shows stats for months back = 1, 2, and 13, which is this month, last month, last year this month.	
x	x	Circulation > Statistical Reports	Circulation Stats by Borrower Stat Classes (Daily)	(161) List of circulation counts by borrower stat class. Filter by location and date range.	
x	x	Circulation > Statistical Reports	Circulation Stats by Borrower Stat Classes (Monthly)	(062) List of circulation counts by borrower stat class. Filter by location, year, and month. Paged by location.	
x	x	Circulation > Statistical Reports	Circulation Stats by Borrower Types (Daily)	(160) List of circulation counts by borrower type. Filter by location and date range.	
x	x	Circulation > Statistical Reports	Circulation Stats by Borrower Types (Monthly)	(063) List of circulation counts by borrower type. Filter by location, year, and month. Paged by location.	
x	x	Circulation > Statistical Reports	Circulation Stats by Call Number Istat Classes	(064) List of circulation counts (CKO and in-house use) by call number istat categories. Filter by location, year, and month. Paged by location.	
x	x	Circulation > Statistical Reports	Circulation Stats by Collection Istat Classes	(065) List of circulation counts (CKO and in-house use) by collection istat categories. Filter by location, year, and month. Paged by location.	
x	x	Circulation > Statistical Reports	Circulation Stats by Itype	(066) List of circulation counts by item loan type. Filter by location, year, and month. Paged by location.	
x	x	Circulation > Statistical Reports	Circulation Stats by Itype - Graph	(067) List of circulation counts by item loan type. Filter by itype, location, year, and month. Paged by location.	

Version 1.5	Version 1.4	Folder	Report Name	Description	Notes for Version 1.5
x	x	Circulation > Statistical Reports	Circulation Stats by Monetary Categories (Monthly)	(068) List of amounts in monetary statistical categories, including money levied, collected, waived, credited, and refunded. Filter by location, year, and month.	
x	x	Circulation > Statistical Reports	Circulation Stats by Monetary Categories (Daily)	(146) List of amounts in monetary statistical categories, including money levied, collected, waived, credited, and refunded. Filter by date range	
x	x	Circulation > Statistical Reports	Circulation Stats by Specified Itypes	(122) List of circulation counts by item loan type. Filter by itype, location, year, and month. Paged by location.	
x	x	Circulation > Statistical Reports	Current Day CIRC Stats	(140) List of statistical counts since the last time the day end process was run. Filter by location. Paged by location.	
x	x	Circulation > Statistical Reports	Custom Statistical Report	(072) List of statistical counts in user-specified statistical categories. Filter by stat category, location, year, and month.	The report had a filter that linked to a SEARCH on all filters. Created a search object against the filters in the stat filters folder. Linked this new search to the report filter.
x	x	Circulation > Statistical Reports	Custom Statistical Report (includes subtotals)	(073) List of statistical counts in user-specified statistical categories. Filter by stat category, location, year, and month. Includes subtotals.	
x	x	Circulation > Statistical Reports	Day of week by Hour	(445S) - Statistical report that includes day of week by hour, Paged by location. Filtered by statistical category, Month, year, and Location.	
x	x	Circulation > Statistical Reports	DEP Last Run Date	(074) Display of the most recent date for which Day End has been run.	

Version 1.5	Version 1.4	Folder	Report Name	Description	Notes for Version 1.5
x	x	Circulation > Statistical Reports	Inter Library Loan (w/o local CKOS)	(410) Inter Library Loan. This report displays ILL's of materials between horizon libraries. This report does NOT include CKO totals for items that are owned by the lending library.	
x	x	Circulation > Statistical Reports	Inter Library Loan (with local CKOS)	(411) Inter Library Loan. This report displays ILL's of materials between horizon libraries. This report includes CKO totals for items that are owned by the lending library.	
x	x	Circulation > Statistical Reports	Net Statistical Activity	(451) Net statistical activity. This report displays the net activity for common 'delta' categories. For example it subtracts the number of deleted items from the number of added items. Filtered by location, month, year, stat subcategory.	
x	x	Circulation > Statistical Reports	Popular Titles (bib usage period)	(075) List of top "N" titles in terms of checkouts. Filter by usage stat period and location.	
x	x	Circulation > Statistical Reports	Reciprocal Borrowing (w/o local CKOS)	(416) Reciprocal Borrowing. This report will show the reciprocal borrowing figures for selected libraries. The CKO totals do NOT include loans to borrowers registered at the lending library.	
x	x	Circulation > Statistical Reports	Reciprocal Borrowing (with local CKOS)	(417) Reciprocal Borrowing. This report will show the reciprocal borrowing figures for selected libraries. The CKO totals include loans to borrowers registered at the lending library.	
x	x	Circulation > Statistical Reports > Current Usage Stats	Blocks Comparison: Call Number Istat	(403) Count of current blocks by call number item statistical class. Filter by location, call istat, and block.	
x	x	Circulation > Statistical Reports > Current Usage Stats	Blocks Comparison: Collection and Istat	(126) Count of current blocks by collection and istat. Filter by borrower location and block type. Paged by borrower location.	

Version 1.5	Version 1.4	Folder	Report Name	Description	Notes for Version 1.5
x	x	Circulation > Statistical Reports > Current Usage Stats	Circulation Stats Comparison: Bstat to Collection and Istat	(120) Count of current checkouts, comparing bstat to collection and istat. Filter by location.	
x	x	Circulation > Statistical Reports > Current Usage Stats	Circulation Stats Comparison: Bstat to Itype	(121) Count of current checkouts, comparing bstat to itype. Filter by location.	
x	x	Circulation > Statistical Reports > Current Usage Stats	Circulation Stats Comparison: Btype to Collection	(070) Count of current checkouts, comparing borrower type to collection code. Filter by location.	
x	x	Circulation > Statistical Reports > Current Usage Stats	Circulation Stats Comparison: Btype to Collection and Istat	(071) Count of current checkouts, comparing borrower type to collection code and istat. Filter by location.	
x	x	Circulation > Statistical Reports > Current Usage Stats	Circulation Stats Comparison: Btype to Itype	(069) Count of current checkouts, comparing item loan type to borrower type. Filter by location.	
x	x	Circulation > Statistical Reports > Fiscal Year	Ad Hoc - Circulation Statistics (Daily) FY	(093) List of statistical counts in circulation categories, including checkout, checkin, and request. Filter by location, stat category, year, and month.	
x	x	Circulation > Statistical Reports > Fiscal Year	Ad Hoc - Circulation Statistics (Monthly) FY	(094) List of statistical counts in circulation categories, including checkout, checkin, and request. Filter by location, stat category, year, and month.	
	x	Circulation > Statistical Reports > Fiscal Year	ADHOC CIRC Stats FY 2004/2005 July-June	(452) ADHOC circulation related stats for Fiscal Year ordered July 2004 - June 2005.	Removed
	x	Circulation > Statistical Reports > Fiscal Year	ADHOC CIRC Stats FY 2004/2005 Sept-Aug	(418) ADHOC circulation related stats for Fiscal Year ordered Sept 2004 - August 2005.	Removed

Version 1.5	Version 1.4	Folder	Report Name	Description	Notes for Version 1.5
x	x	Circulation > Statistical Reports > Fiscal Year	ADHOC Overview Fiscal Year 2004/2005	(415) ADHOC Stats By Fiscal Year July 2004/June 2005	
x		Circulation > Statistical Reports > Fiscal Year	Fiscal Year Prompted	(478) ADHOC circulation related stats for Fiscal Year prompted.	Replaced fiscal year specific reports (452)(418) with Fiscal Year Prompted report.
x		Circulation > Statistical Reports > Fiscal Year	ADHOC CIRC Stats by Fiscal Year Prompt	(505) ADHOC circulation related stats for fiscal year selected in prompt.	Added
x	x	Circulation > Statistical Reports > Fiscal Year	Circulation Intra-Library Stats by Borrower Location FY	(194) Crosstab for Circulation Location and Borrower Location. Results include 'cko' & 'ihu'. Prompts for Location, Year, month.	
x	x	Circulation > Statistical Reports > Fiscal Year	Circulation Intra-Library Stats by Item Location FY	(195) Crosstab for Circ Location and Item Location. Results include 'cko' & 'ihu'. Prompts for Location, Year, month.	
x	x	Circulation > Statistical Reports > Fiscal Year	Circulation Stats by Borrower Stat Classes FY	(095) List of circulation counts by borrower stat class. Filter by location, year, and month. Paged by location.	
x	x	Circulation > Statistical Reports > Fiscal Year	Circulation Stats by Borrower Types FY	(096) List of circulation counts by borrower type. Filter by location, year, and month. Paged by location.	
x	x	Circulation > Statistical Reports > Fiscal Year	Circulation Stats by Call Number Istat Classes FY	(097) List of circulation counts (CKO and in-house use) by call number istat categories. Filter by location, year, and month. Paged by location.	
x	x	Circulation > Statistical Reports > Fiscal Year	Circulation Stats by Collection Istat Classes FY	(098) List of circulation counts (CKO and in-house use) by collection istat categories. Filter by location, year, and month. Paged by location.	
x	x	Circulation > Statistical Reports > Fiscal Year	Circulation Stats by Itype FY	(099) List of circulation counts by item loan type. Filter by location, year, and month. Paged by location.	

Release Notes for Web Reporter version 1.5

Version 1.5	Version 1.4	Folder	Report Name	Description	Notes for Version 1.5
x	x	Circulation > Statistical Reports > Fiscal Year	Circulation Stats by Itype - Graph FY	(100) List of circulation counts by item loan type. Filter by itype, location, year, and month. Paged by location.	
x	x	Circulation > Statistical Reports > Fiscal Year	Circulation Stats by Monetary Categories FY	(101) List of amounts in monetary statistical categories, including money levied, collected, waived, credited, and refunded. Filter by location, year, and month.	
x	x	Circulation > Statistical Reports > Fiscal Year	Circulation Stats by Specified Itypes FY	(102) List of circulation counts by item loan type. Filter by itype, location, year, and month. Paged by location.	
x	x	Circulation > Statistical Reports > Fiscal Year	Custom Statistical Report (includes subtotals) FY	(103) List of statistical counts in user-specified statistical categories. Filter by stat category, location, year, and month. Includes subtotals.	
x	x	Circulation > Statistical Reports > Fiscal Year	Custom Statistical Report FY	(104) List of statistical counts in user-specified statistical categories. Filter by stat category, location, year, and month.	
x	x	Circulation > Statistical Reports > Fiscal Year	Map of Months to Fiscal Year	(149) List of calendar month and year mapped to fiscal year.	
x	x	Circulation > Statistical Reports > Summary Graphs	Borrower Additions & Deletions	(201) Graph of New Borrower Stats. Paged By Location. Goes back 18 months by default.	
x	x	Circulation > Statistical Reports > Summary Graphs	CKI Overview All Locations	(216) CKI Overview (ALL Locations Against ALL Stat Summary Dates)	
x	x	Circulation > Statistical Reports > Summary Graphs	CKI Overview Filtered By Location	(212) CKI Overview Filter Prompt on Location	
x	x	Circulation > Statistical Reports > Summary Graphs	CKI Overview Paged By Location	(217) CKI Overview (All Locations Against All Stat Summary Dates) Paged By Location	

Version 1.5	Version 1.4	Folder	Report Name	Description	Notes for Version 1.5
x	x	Circulation > Statistical Reports > Summary Graphs	CKO Overview Filtered By Location	(215) CKO Overview Filter Prompt on Location	
x	x	Circulation > Statistical Reports > Summary Graphs	CKO Overview All Locations	(213) CKO Overview (All Locations Against All Stat Summary Dates) Paged By Location	
x	x	Circulation > Statistical Reports > Summary Graphs	CKO Overview Paged By Location	(214) CKO Overview (All Locations Against All Stat Summary Dates) Paged By Location	
x	x	Circulation > Statistical Reports > Summary Graphs	Overview - Circulation	(304) Summary of Circulation Data	
x	x	Circulation > Statistical Reports > Telecirc Reports	Call List	(204) Call List by borrower location	
x	x	Circulation > Statistical Reports > Telecirc Reports	Call List Summary	(205) Lists TC Borrower ID, TC Status, TC Count.	
x	x	Circulation > Statistical Reports > Telecirc Reports	Call Status Summary by Location	(206) Lists Location, Call Status & Count	
x	x	Circulation > Statistical Reports > Telecirc Reports	Call Totals by Month	(207) Lists Location, Month, Year & Total By Month.	
x	x	Circulation > Statistical Reports > Telecirc Reports	Patron Phone History Report	(208) Lists Name, Fail Reason, Last Call & Status.	
x	x	Director Dashboard	Acquisitions Dashboard	(300) Acquisitions Dashboard	

Version 1.5	Version 1.4	Folder	Report Name	Description	Notes for Version 1.5
x	x	Director Dashboard	Cataloging Dashboard	(301) Cataloging Dashboard	
x	x	Director Dashboard	Circulation Dashboard	(302) Circulation Dashboard	
x	x	Reserve Book Room	Active Reserve Titles	(077) List of active reserve courses, instructors, and titles. Filter by course or instructor.	Removed course group number from default display.
x	x	Reserve Book Room	Inactive Reserve Titles	(078) List of inactive reserve courses, instructors, and titles. Filter by course or instructor.	
x	x	Reserve Book Room	Instructor Withdrawal Letter	(464) RBR Instructor Withdrawal Letter. Prompt for date range of withdrawal date.	
x	x	Reserve Book Room	RBR ICT List	(465) List of RBR Titles By Location-Course-Instructor-Status & Title. Prompts are optional.	
x	x	Reserve Book Room	Title List by Course	(469) List by Course of Instructors & Titles (Including Archived) Counts for Active & Inactive copies.	
x	x	Reserve Book Room	Title List by Instructor	(466) List by Instructors of Courses & Titles (Including Archived) Counts for Active & Inactive copies.	
x	x	Schools	Blocks by Grade	(086) List of students with blocks, including grade, homeroom, name, block type, and amount owed. Filter by several student and item options. Paged by grade.	
x	x	Schools	Blocks by Grade - Items and Titles	(144) List of students with blocks, including grade, homeroom, name, item barcode, due date, price, title, block type, and amount owed. Filter by several student and item options. Paged by grade.	
x	x	Schools	Blocks by Homeroom	(087) List of students with blocks, including homeroom, name, item barcode, due date, price, title, block type, and amount owed. Filter by several student and item options.	

Version 1.5	Version 1.4	Folder	Report Name	Description	Notes for Version 1.5
x	x	Schools	Blocks by Homeroom - Items and Titles	(145) List of students with blocks, including homeroom, name, item barcode, due date, price, title, block type, and amount owed. Filter by several student and item options.	
x	x	Schools	Blocks by Homeroom (paged by Homeroom)	(088) List of students with blocks, including homeroom, name, item barcode, due date, price, title, block type, and amount owed. Filter by several student, item, and block options. Paged by homeroom.	
x	x	Schools	Borrower List	(089) List of borrowers, including ID, name, location, grade, homeroom, and teacher. Filter by borrower barcode, bstat, btype, expiration date (range), ID, location, name, second ID, grade, homeroom, and teacher.	
x	x	Schools	Borrower Summary	(133) List of Items Out, Requests & Blocks by Borrower.	
x	x	Schools	Borrowers & Items By Due Date	(461) Report of Borrowers & Items Out - 3 Borrowers per page. (Max of 8 items out)	Removed all grid lines to improve printing.
x	x	Schools	Homeroom Short Summary	(117) One Page Homeroom Summary	
x	x	Schools	Homeroom Summary	(134) List of Borrower Blocks, Items Out & Requests by homeroom.	
x	x	Schools	Items Out by Grade (paged by grade)	(090) List of grade, homeroom, name, item barcode, call number, title, and due date. Filter by one or more borrower and item options. Paged by grade.	
x	x	Schools	Items Out by Homeroom	(091) List of homeroom, name, item barcode, call number, title, and due date. Filter by one or more borrower and item options.	

Version 1.5	Version 1.4	Folder	Report Name	Description	Notes for Version 1.5
x	x	Schools	Items Out by Homeroom (paged by homeroom)	(092) List of homeroom, name, item barcode, call number, title, and due date. Filter by one or more borrower and item options. Paged by homeroom.	
x	x	Serials	Routing List	(079) List of routing list, order, borrower name, and ID for routed titles. Filter by routing list and borrower options.	
x	x	Serials	Serial Copy Records by ACQ Status and Location (paged by location)	(081) List of serial copy records by acquisitions status, including bib ID, title, and copy description. Filter by location and acquisitions status. Paged by location. Note: Former Report #80 and #81 were combined.	
x	x	Serials	Serial Titles Currently Received (count)	(082) Count of serial titles currently received. Filter by location. Paged by location.	
x	x	Serials	Serial Titles Currently Received (list)	(083) List of currently received serial copies, title, and bib ID. Filter by location. Paged by location.	
x	x	Serials	Serial Titles Routed	(084) List of serials titles that may be routed, including bib ID, title, and copy description. Filter by location.	
x	x	Serials	Serials Circulation Summary	(448S) Serials Circulation Summary (paged by Location). This report gives you the number of issues received & the total number of checkouts for a title, for a various serials location. This is a SQL report and may be altered only within the SQL.	
x	x	Serials	Summary of Serial Holdings by Location	(085) List of serial titles and holdings summary information, including start and end dates, enumeration, and chronology. Filter by location. Paged by location.	Reformatted.

## General changes to Reports

Version 1.5	Version 1.4	Folder	Report Name	Description	Notes for Version 1.5
x		(multiple)	(multiple)	All free-form SQL reports.	Verified and changed the database instance to Horizon.  Note: If you do not have a database instance named Horizon, you must add it or change the name to match your defined Database Instance.

## General Changes to Attributes

Version 1.5	Version 1.4	Attribute Name	Notes for Version 1.5
x		Account Year Key	Added to account_year table. Combines account and year to make a unique row.
x	x	Author (was Auth_ID)	Column Alias changed from Auth_ID to Author. Form format changed from integer to text.
x		Available Items	Added Purchase_Alert table.
x	x	Bib Control Selection	Format changed from numeric to character.
x	x	Borrower Name	Added an attribute form option for (First Initial. Last Name).
x	x	Budget Transaction Time	The attribute was called Time, but based on the Date column. This meant that the time was always displayed as 12:00. In order for a report using Prior Amount to make sense, it has to be sorted by specific time of the events.
x		Burb Collection Code	The code from the rv_Burb_Item table. This allows for all Blocks, including fees, not linked to items.
x		Burb Collection Code (Upper)	Alternate attribute. Converts code to upper case.
x	x	Burb Item Collection Descr (was Burb Item Collection)	Renamed. Changed link from View to Alias of Collection table. Set Alias table as look-up. Using this attribute's links to Item table removes any fee not associated with an item from the report.
x	x	Burb Item Itype Descr (was Burb Item Type)	Renamed. Using this attribute's links to Item table and removes any fee not associated with an item from the report.
x		Burb Itype Code	The code from the rv_Burb_Item table. This allows for all blocks, including fees, not linked to items.
x		Burb Itype Code (Upper)	Alternate attribute. Converts code to upper case.
x	x	Burb History Trans Location (was Burb Trans Location)	Renamed.

Version 1.5	Version 1.4	Attribute Name	Notes for Version 1.5
x		Circ Item Collection (Upper)	Alternate attribute. Converts code to upper Case.
x		Circ Item Itype (Upper)	Alternate attribute. Converts code to upper case.
x		Circ Item Location (Upper)	Alternate attribute. Converts code to upper case.
x		Circ Item Price	
x		Circ Privilege	Circulation privilege/exception tables.
x		Circ Privilege Exception Key	Circulation privilege/exception tables.
x		Circ Privilege Key	Circulation privilege/exception tables.
x		Coll Avg Repl Cost	Average replacement cost from the Collection table.
x		Collection (Upper)	Alternate attribute. Converts code to upper case.
x		Collection Group	New column collection_group added to Collection_Group table.
x		Collection In Group	New column collection_group added to Collection_Group_Collection table.
x		Copy Itype	Itype from the Copy table (Serials).
x		CP Exception Btype Group	Circulation privilege/exception tables.
x		CP Exception Denominator	Circulation privilege/exception tables.
x		CP Exception Denominator Unit	Circulation privilege/exception tables.
x		CP Exception Itype Group	Circulation privilege/exception tables.
x		CP Exception Value	Circulation privilege/exception tables.
x		CP Exception Value Unit	Circulation privilege/exception tables.
x		CP Location Group	Circulation privilege/exception tables.
x		Days In Transit	Added Item Transit table.
x		Days New Items Tracked	New column new_item_duration added to Collection_Group table.
x		Default Denominator	Circulation privilege/exception tables.
x		Default Unit	Circulation privilege/exception tables.
x		Default Value	Circulation privilege/exception tables.
x		Denominator Unit	Circulation privilege/exception tables.
x		Discard Collection (Upper)	Alternate attribute. Converts code to upper case.
x		Discard Itype (Upper)	Alternate attribute. Converts code to upper case.
x	x	Fee Payment ID	Changed parent/child definitions.
x	x	Fee Reference ID	Changed parent/child definitions.

Version 1.5	Version 1.4	Attribute Name	Notes for Version 1.5
x		Fee Payment Invoice Number	New column invoice_number added to Fee_Payment table.
x		Hours In Transit	Added Item Transit table.
x		HS Circ Borrower ID	
x		HS Circ CKO Location (Upper)	Alternate attribute. Converts code to upper case.
x	x	Internal Note	This is a TEXT column in the database designed to allow a large amount of content. These fields by SQL rule cannot be in a DISTINCT statement. That is the default of the VLDB settings in the project. This will cause an error if added to a report. Notes for changing in a report are added to the attribute description as: CANNOT Be Used With Default VLDB Settings. (Text Fields Cannot Be in a DISTINCT Query) From MSTR Desktop: Select Data > VLDB Properties > Select/Insert>Distinct/Group By Options. Change the Option.
x		Item Available For Pull List	New column available_for_pull_list added to Item_Status table.
x		Item CKO Loc	CKO location from Item table.
x	x	Item CKO Location	Added form for name (was code only).
x		Item CKO Location (Upper)	Alternate attribute. Converts code to upper case.
x	x	Item Location	Changed link from view to Alias of Location table. Set Alias table as look-up.
x		Item Location (Upper)	Alternate attribute. Converts code to upper case.
x		Item Title	Column from Item With Title table.
x		Item Transit Key	Added Item Transit table.
x		Itype (Upper)	Alternate attribute. Converts code to upper case.
x		Itype Is Stats Only	New column stats_only added to ITYPE table.
x		Location Pa Ratio	New column added to Location table.
x	x	Location SAN	Renamed to correct misspelling Location SAN.
x		New Item Tracking	New column new_item_tracking added to Collection_Group table.
x		Number Requests	Purchase_Alert table.
x		PA Pickup Location	Purchase_Alert table.
x		Payment Fine Item Location	Needed for report (474).
x		Payment Item Item ID	Needed for report (474).
x		Pickup Location (Upper)	Alternate attribute. Converts code to upper Case.

Version 1.5	Version 1.4	Attribute Name	Notes for Version 1.5
x	x	PO Collection	Changed link from view to Alias of Collection table. Set Alias table as look-up.
x	x	POLI Collection	Changed link from view to Alias of Collection table. Set Alias table as look-up.
x		POLI Collection (Upper)	Alternate attribute. Converts code to upper case.
x		POLI Itype (Upper)	Alternate attribute. Converts code to upper case.
x	x	PR Dist Collection	Added attribute form for description. Required Alias table of collection.
x		PR Dist Collection (Upper)	Alternate attribute. Converts code to upper case.
x	x	PR Dist Itype	Changed link from view to Alias of Itype table. Set Alias table as look-up.
x		PR Dist Itype (Upper)	Alternate attribute. Converts code to upper case.
x		PR Dist Quantity	
x		PR Distribution Key	
x		PR Ordering Note	
x		Purchase Alert Bib ID	Purchase_Alert table.
x		Purchase Alert Title	Purchase_Alert table.
x		Req Ratio	Purchase_Alert table.
x		Request Item Collection (Upper)	Alternate attribute. Converts code to upper case.
x		Request Item Itype (Upper)	Alternate attribute. Converts code to upper case.
x		Request Location (Upper)	Alternate attribute. Converts code to upper case.
x		Route Borrower ID	
x		Route Serial ID	
x	x	Rqh Last Request Status	Changed link to alias of rv_request_status.
x		Rqh Request ID	
x	x	Rqh Resolved Status	Added short description (Default Display) and long description as attribute forms.
x	x	Rqh Itype	Removed parent link to Itype. Changed link from view to Alias of Itype as look-up.
x		Send Preoverdue	New column send_preoverdue added to Borrower_Address table.
x		Serial Route Key	
x	x	Stat Borrower Location	Changed link from view to Alias of Location table. Set Alias table as look-up.

Version 1.5	Version 1.4	Attribute Name	Notes for Version 1.5
x		Stat Borrower Location (Upper)	Alternate attribute. Converts code to upper case.
x	x	Stat Item Location	Changed link from view to Alias of Location table. Set Alias table as look-up.
x		Stat Item Location (Upper)	Alternate attribute. Converts code to upper case.
x		Stat Transaction Location (Upper)	Alternate attribute. Converts code to upper case.
x		Target Ratio	Purchase_Alert table.
x		Top Circ Detail Bib ID	
x		Top Circ Detail CKOs	
x		Top Circ Detail Collection Group	
x		Top Circ Detail If Deleted	
x		Top Circ Detail Key	
x		Top Circ Detail Period	
x		Top Circ Detail Title	
x		Top Circ Number	New column top_count added to Collection_Group table.
x		Top Circ Summary Bib ID	
x		Top Circ Summary CKOs	
x		Top Circ Summary Collection Group	
x		Top Circ Summary If Deleted	
x		Top Circ Summary Key	
x		Top Circ Summary Period	
x		Top Circ Summary Ranking	
x		Top Circ Tracking?	New column top_tracking added to Collection_Group table.
x		Total Items	Purchase_Alert table.
x		Transit Date	Item Transit table.
x		Transit Datetime	Item Transit table.
x		Transit From Location	Item Transit table.
x		Transit Item ID	Item Transit table.
x		Transit Item Status	Item Transit table.
x		Transit Staff User ID	Item Transit table.

Release Notes for Web Reporter version 1.5

Version 1.5	Version 1.4	Attribute Name	Notes for Version 1.5
x		Transit To Location	Item Transit table.
x		Unrequestable	Purchase_Alert table.
x		Usage Stat Key	
x		Usage Stat Location	
x		Use Guardian	New column use_guardian added to Borrower table.
x	x	Staff User Email Address (was User Email Address)	Renamed.
x	x	Staff User Expire Date (was User Expire Date)	Renamed.
x	x	Staff User ID (was User ID)	Renamed.
x	x	Staff User Last Update Date (was User Last Update Date)	Renamed.
x	x	Staff User Location (was User Location)	Renamed.
x	x	Staff User Name (was User Name)	Renamed.
x		Preoverdue Day	New column pre_overdue_day added to BTYPE table.
x		Expired Checkout	New column expired_cko added to Location table.
x		Last Preoverdue Date	New column last_preoverdue_date added to Location table.
x		PA Ratio	New column pa_ratio added to Location table.
x	x	Workslip Note	<p>This is a TEXT Column in the database designed to allow a large amount of content. These fields by SQL rule cannot be in a DISTINCT statement. That is the default of the VLDB settings in the project. This will cause an error if added to a report. Notes for changing in a report are added to the Attribute Description as follows:</p> <p><i>CANNOT Be Used With Default VLDB Settings. (Text Fields Cannot Be in a DISTINCT Query) From MSTR Desktop: Select Data &gt; VLDB Properties &gt; Select/Insert&gt;Distinct/Group By Options. Change the Option.</i></p>

## General Changes to Consolidations

Version 1.5	Version 1.4	Consolidation Name	Notes for Version 1.5
x		July2007/June2008 Fiscal Year Stats	
x		July2008/June2009 Fiscal Year Stats	
x		July2009/June2010 Fiscal Year Stats	
x		Oct2007/Sep2008 Fiscal Year Stats	
x		Oct2008/Sep2009 Fiscal Year Stats	
x		Oct2009/Sep2010 Fiscal Year Stats	
x	x	Stat Fiscal Years (All)	

## General Changes to Custom Groups

Version 1.5	Version 1.4	Custom Group Name	Notes for Version 1.5
x		Hourly Stats	The current SQL Report #445S has the data but not the format from the 7X ADHOC reports. These three groups allow for the traditional format (Screen Capture on views sheet).
x		Hours	The current SQL Report #445S has the data but not the format from the 7X ADHOC reports. These three groups allow for the traditional format (Screen Capture on views sheet).
x		Week Days	The current SQL Report #445S has the data but not the format from the 7X ADHOC reports. These three groups allow for the traditional format (Screen Capture on views sheet).

## General Changes to Drill Templates

Version 1.5	Version 1.4	Drill Template Name	Notes for Version 1.5
x		Item Usage Detail	Drill map template added for item detail from Dusty Book reports.
x		PA Item Details	Drill map template added for item detail from the Purchase Alert report.
x		PO Line Budget	Drill map template added for Report Budget Amounts By Vendor.

## General Changes to Facts

Version 1.5	Version 1.4	Fact Name	Notes for Version 1.5
x		Available Items	Purchase_Alert table.
x		Avg Repl Cost	
x		Days In Transit	
x	x	Fee Amount	Extended to fee payment detail.
x		Hours In Transit	
x	x	N Opac Renewals	Modified fact definition so that any field with a NULL value would be read as a zero. (NullToZero([n_opac_renewals])). SEE Metric=Use Total.
x		Number Requests	Purchase_Alert table.
x		Req Ratio	Purchase_Alert table.
x		Top Circ Detail N Ckos	
x		Top Circ Summary N Ckos	
x		Total Items	Purchase_Alert table.
x		Unrequestable	Purchase_Alert table.

## General Changes to Filters

Version 1.5	Version 1.4	Filter Template Name	Notes for Version 1.5
x		Account Status=Open	A filter limit applied to the Account (Budget) Status = Open.
x		Acq Stat Subcategory (Year)	This will limit the list to include only acquisitions categories associated with the years selected in the first prompt. Currently not applied to any reports. Recommended to use in the Report ACQ Stats-Items Received By Budget.
x		Acq Stats For Budget & Year Filter Limit	Applied to filter prompt Acq Stat Subcategory (Year).
x		Borr Last CKO Date is Yesterday	
x		Borrower Address Contains	
x		Borrower City, State (Required)	
x		Borrower Renewed This Month	

Version 1.5	Version 1.4	Filter Template Name	Notes for Version 1.5
x		Borrowers Created This Month	
x		Budget Limited By Transaction Date (Optional)	Budget list is limited to transactions in the time period selected at the embedded date prompt.
x		Budget Transaction Detail Budget	
x		Budget Transaction Types (Optional)	Filter on Budget Transaction Amt Type (Optional).
x		Budget Transaction Types (Required)	Filter on Budget Transaction Amt Type (Required).
x		Budget Transaction Users	
x		Hold Shelf (Request Status in 1,3)	Limits results to Hold Shelf Status 1-Hold, 3-Hold expired.
x		Location Group (Required)	
x		Obsolete Stat Categories	
x		Open Budgets	Filter that is pre-limited by open status.
x		PA Pickup Location	Prompt filter for Purchase Alert Pickup Location.
x		Request Item Barcode Filter (Not Required)	
x		Request Status is 0 - Requested	Filter limit based on Request Status = 0.
x		School Notice Blocks (Used in 3 per page)	
x		Stat Date is 1 Week Ago Yesterday	Filter limit based on Today Minus 8 Days.
x		Stat Date is Yesterday	Added limit filter based on Date = Today minus 1 day.
x		Top Circ Detail Period	
x		Top Circ Summary Period	
x		Top Circ Titles (Detail)	Prompted filter on top # ranking. The number is applied across all collection groups.
x		Top Circ Titles (Detail) Per Collection Group	Prompted filter on top # ranking. The number is applied to each collection group.
x		Top Circ Titles (Summary)	Prompted filter on top # ranking. The number is applied across all collection groups.
x		Top Circ Titles (Summary) Per Collection Group	Prompted filter on top # ranking. The number is applied to each collection group.
x	x	Transaction Date Range (Required)	Changed the End Date default to be Today. Previously was Today Plus 30 Days.

Release Notes for Web Reporter version 1.5

<b>Version 1.5</b>	<b>Version 1.4</b>	<b>Filter Template Name</b>	<b>Notes for Version 1.5</b>
x		Transit Date Range (Required)	Filter on Transit Date Range.
x		Transit From Location (Optional)	Filter on Transit From Location (Optional).
x		Transit From Location (Required)	Filter on Transit From Location (Required).
x		Transit Item Status (Optional)	Filter on Transit Item Status.
x		Transit To Location (Optional)	Filter on Transit To Location (Optional).
x		Transit To Location (Required)	Filter on Transit To Location (Required).
x		Vendor Name (Primary Only)	Filter that is prelimited by Primary Type.
x		Vendor Type Is Primary (Limit)	A filter limit applied to the Vendor Name (Primary Only) filter.

## General Changes to Folders

Version 1.5	Version 1.4	Folder Name	Notes for Version 1.5
x	x	Bib Usage Attributes	Moved under Folder Stats Attr.

## General Changes to Metrics

Version 1.5	Version 1.4	Metric Name	Notes for Version 1.5
x		Bib Count	Added Distinct Count on Bib_ID.
x		Borrower Count With Blocks	Added.
x		Borrower Count With Fee Blocks	Added.
x		Collection Avg Repl Cost	Added
x		Count Items In Transit	Added Distinct Count on Item#.
x		Count of Invoices	Added.
x		Created Borrowers Current Month	Added.
x		Days In Transit	Added.
x		Hold Shelf Count	Added Count of Request ID with Metric Filter on Request Status (1)Hold or (3)Hold Expired.
x		PA Available Items	Added.
x		PA Number Requests	Added.
x		PA Total Items	Added.
x		Percentage Active Users	Added.
x		Renewed Borrowers Current Month	Added.
x		Stat Total is 1 Week Ago Yesterday	Applied Metric Filter 'Stat Date is 1 Week Ago Yesterday.
x	x	Stat Total Yesterday	Applied Metric Filter 'Stat Date is Yesterday.
x		Top Circ Detail CKOs	Added.
x		Top Circ Summary CKOs	Added.
x		Total Hours In Transit	Added.
x	x	Use Total	The component n_opac_renewals was modified. Counts previously were off if there were nulls in this fact. See Fact=n_opac_renewals.
x		Yesterday Borrowers Active Count	Added.

## General Changes to Prompts

Version 1.5	Version 1.4	Prompt Name	Notes for Version 1.5
x		Borrower Address Filters	Added.
x		Borrower Address Templates	Added.
x		Budget Transaction Filters	Added.
x		Stat Date Options	Added.
x		Transit Filters	Added prompt to select Transit Filters needed in a report.
x	x	Vendor Filters	Added a filter choice for Primary Vendors Only.

## General Changes to Search Objects

Version 1.5	Version 1.4	Search Object Name	Notes for Version 1.5
x		Stat Filter Search (Public Objects > Searches > Stat Filter Search)	Added Search Object to work with filter in Report 072-Custom Statistical Reports.

## General Changes to SQL Reports

Version 1.5	Version 1.4	SQL Report Name	Notes for Version 1.5
x	x	Borrower with No Bstat	In the Borrower with No Bstat report, the free SQL information was missing a quote after No Bstat. This has been corrected, as follows: <i>select location, 'No Bstat' as 'problem', borrower#, name_reconstructed from borrower where borrower# not in (select distinct borrower# from borrower_bstat) and location in ([Location prompt required])"</i>

## General Changes to Tables

Version 1.5	Version 1.4	Table Name	Notes for Version 1.5
x		Circ_privilege	Added.
x		Circ_privilege_code	Added.
x		Collection_Group	Added.
x		Collection_Group_Collection	Added.
x		purchase_alert	Table added to report on Purchase Alert Requests.
x		rv_Item_Transit	Added to Reflect Data from Item_Transit.

Version 1.5	Version 1.4	Table Name	Notes for Version 1.5
x		rv_top_circ_calendar_unit	Table added to report on Top Circs.
x		rv_top_circ_control	Table added to report on Top Circs.
x		rv_top_circ_detail	Table added to report on Top Circs.
x		rv_top_circ_detail_period	Table added to report on Top Circs.
x		rv_top_circ_summary	Table added to report on Top Circs.
x		rv_top_circ_summary_period	Table added to report on Top Circs.

## General Changes to Table Aliases

Version 1.5	Version 1.4	Table Alias Name	Notes for Version 1.5
x		RV_Payment_Item(Alias)	Alias table needed to prevent cross joins when linking item info to Payment_detail.

